

TECHNOCRAFT
INDUSTRIES INDIA LTD.

MÄCH

AluPly

ADJUSTABLE WALL/COLUMN FORMWORK SYSTEM

PRODUCT CATALOGUE &
OPERATING INSTRUCTIONS



QUICK



SAFE



ROBUST

■ ■ MÄCH AluPly

■ ■ INTRODUCTION

Technocraft is a multi-product multinational group, which was established in 1972 by a group of technologists with the aim of manufacturing high precision and sophisticated products, for discerning worldwide markets. Technocraft enjoys a significant position in five main business industries, Scaffolding & Formwork Systems, Drum Closures, Pipes & Tubes, Engineering Services, and Cotton Yarn. We are an ISO 9001:2015 certified company. Headquartered in Mumbai (India), with overseas offices and warehouses in USA, Australia, United Kingdom, Poland, New Zealand, and China. Technocraft has attained an important qualification as a government-recognized Foreign Trading House.

The Technocraft family consists of more than 3000 skilled workers, technicians, and technologists. All of them are working towards the common goal of delivering the best quality products to our customers, around the world. The manufacturing process is continuously reviewed and upgraded with the latest technology to yield higher productivity and improved quality product. There are five manufacturing plants located near Mumbai, India providing over 50,000 square meters of production space. There is one location in China providing over 33,000 Square meters of production space.

■ ■ VISION

To lead the industry by providing innovative products, solutions, and support that exceed expectations.

■ ■ MISSION

To positively impact the global community by providing Safe, Efficient, and Customer focused solutions in the factory and on the job site.

■ ■ VALUES

Quality – Trust – Leadership – Commitment – Innovation

■ ■ TECHNOCRAFT'S ADVANTAGE

Technocraft is focused on their customer, understanding their needs, requirements, and expectations. This focus allows Technocraft to design processes, procedures and tooling in a manner that delivers products to the customer that meet required specifications and perform as expected. Technocraft is a vertically integrated manufacturer, from slitting to packing the manufacturing process occurs within the walls of their factory. This allows them the ability to monitor and control all aspects of production, keeping costs low and quality high.

■ ■ MÄCH AluPly

■ ■ OUR HISTORY

The company launched its first major export drive in 1977. It was recognized as an export house by the government of India in 1979. The company has won a number of awards for export excellence, since its inception, including the “Best Export Performance” awarded by the Prime Minister of India.

■ ■ OUR QUALITY POLICY

TECHNOCRAFT is committed to being a leader in the design and manufacturing of scaffolding and will always deliver high-quality, innovative, products that meet or exceed our customers’ expectations and requirements.

TECHNOCRAFT is committed to delivering defect-free products on schedule and on budget while maintaining compliance with applicable regulatory and industry standards.

Welding Standards conform to AWS D1.1 / D1.1M and ISO 3834

Welding Certification per EN 1090-2 and EN 1090-3 from SLV, Germany.

Product certification for European Props as per EN 1065:1998 from Sigma Karlsruhe, Germany.

Techlok System tested as per EN 12810/12811 at Oxford University England.

Proven Quality System from Design to Delivery and beyond.

Selection of proper material and purchased from directly steel manufacturers only.

Material Testing (In-house & reputed Labs).

Material identification system.

Material review process before the material is released for production.

In-Process Quality monitoring system to ensure quality at every stage.

Periodic calibration of all measuring instruments, testing equipment, and Gauges.

Product testing

Traceability, all products are marked with a code that identifies the batch and supporting process control documents.



■ ■
INDEX

TOPIC	PAGE NO.
■ ■ PRODUCTS	
WALL PANELS	06
MULTI PANELS	07
INTERNAL CORNER PANELS	08
OUTSIDE CORNER PANELS	09
SWING CORNER PANELS	09
■ ■ ACCESSORIES	
WALKWAY BRACKET	10
BOTTOM BRACKET	10
TOP BRACKET	10
TOP BRACKET WITH SINGLE U	11
FOOTING BRACKET	11
MULTI PANEL TIE CLAMP	11
CONNECTING PIN	12
REKER PROP	12
UNIVERSAL WALER	13
UNIVERSAL WALER TIE CLAMP	13
HINGE WALERS	14
13.7" WIDE STEEL LADDER	14
LADDER CONNECTOR	15
PANEL TO PANEL CLAMP	15
ADJUSTABLE PANEL CLAMP	15
BULK HEAD TIE CLAMP	16
LIFTING BRACKET	16
SYSTEM CHARACTERISTICS	17
PLYWOOD CHARACTERISTICS	17

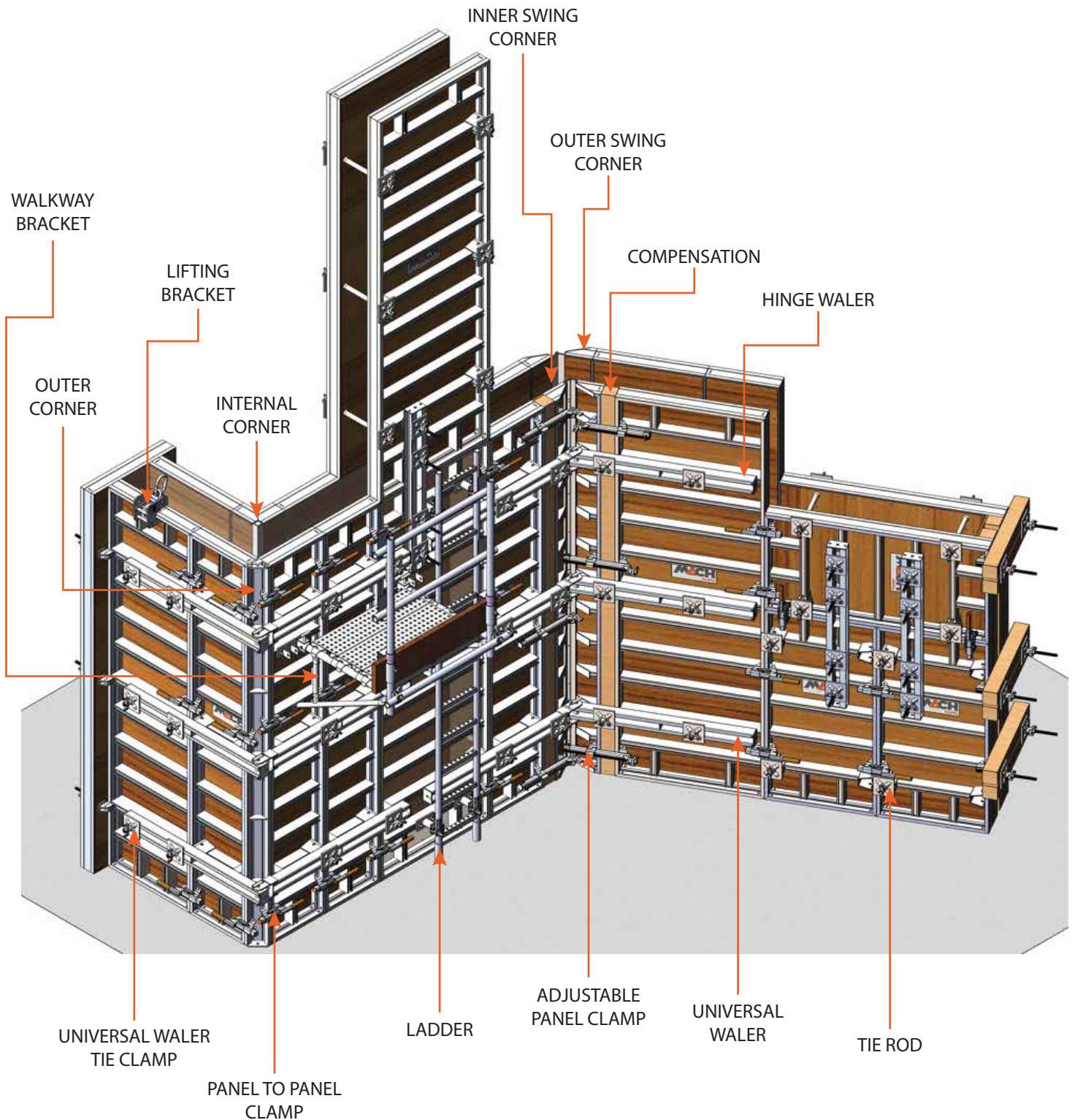


■ ■
INDEX

TOPIC	PAGE NO.
■ ■ SYSTEM GUIDE	
ASSEMBLY OF ALUPLY WALLS	18
DETAILING OF TIE ROD WITH PLATE	20
OPERATING INSTRUCTIONS FOR LIFTING BRACKET	21
HIGH WALLS	23
ADJUSTABLE COLUMNS SYSTEM	24
COLUMN WITH OUTER CORNER	26
COMPENSATION BETWEEN WALL PANELS	27
WALL PANELS AT CORNERS	28
WALL PANELS AT T-CLOSURES	29
WALL PANELS AT CONTINUING WALL	30
OUTSIDE CORNER 90°	31
SWING CORNER WITH HINGE WALER	32
SINGLE SIDED WALL SOLUTIONS	33
SYSTEM MAINTAINANCE & CLEANING	34

■ ■
MÄCH AluPly

MÄCH AluPly SYSTEM



MÄCH AluPly

WALL PANELS

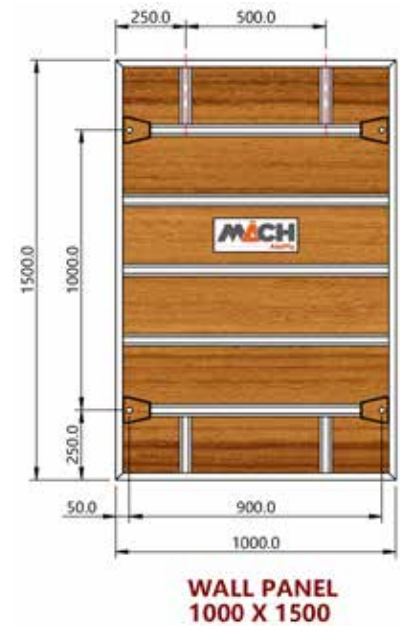
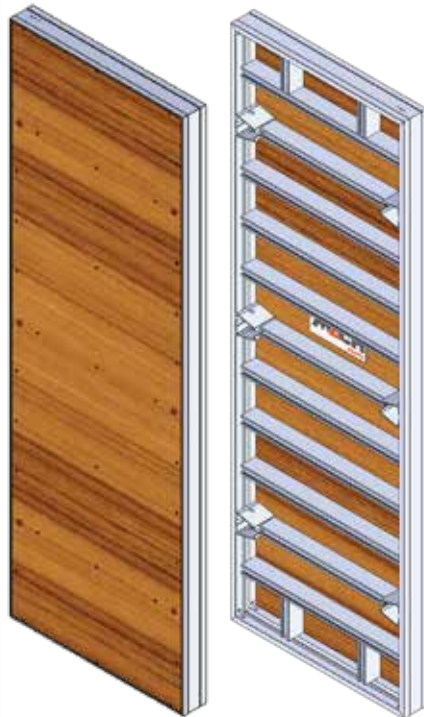
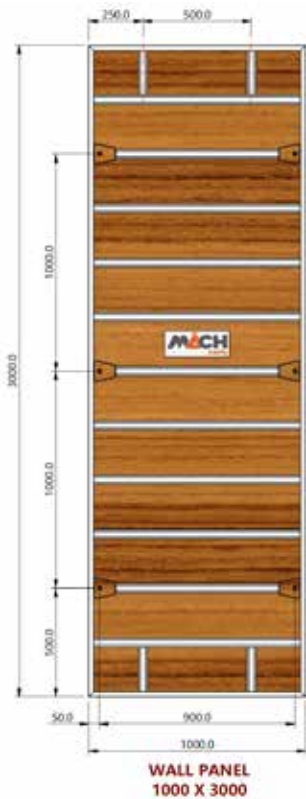
Wall panels are the fastest way securing structure for concrete wall.

MATERIAL

Aluminium Alloy 6061-T6 / Equivalent

FINISH

Mill Finish



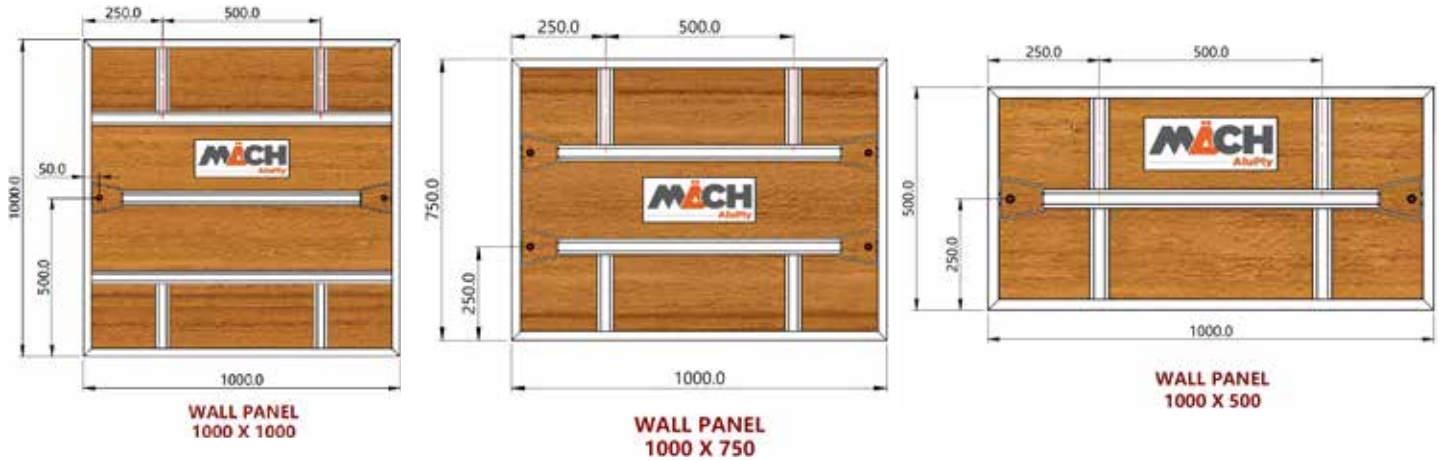
Product Code	Description	Width X Height	Weight
		MM	Kg
MAP-WP-100-300	Aluminium Wall panel With Plywood	1000 x 3000	74.1
MAP-WP-075-300	Aluminium Wall panel With Plywood	750 x 3000	56.2
MAP-WP-060-300	Aluminium Wall panel With Plywood	600 x 3000	48.4
MAP-WP-050-300	Aluminium Wall panel With Plywood	500 x 3000	43.3
MAP-WP-045-300	Aluminium Wall panel With Plywood	450 x 3000	40.6
MAP-WP-030-300	Aluminium Wall panel With plywood	300 x 3000	32.5

Product Code	Description	Width X Height	Weight
		MM	Kg
MAP-WP-100-150	Aluminium Wall panel With Plywood	1000 x 1500	40.9
MAP-WP-075-150	Aluminium Wall panel With Plywood	750 x 1500	30.8
MAP-WP-060-150	Aluminium Wall panel With Plywood	600 x 1500	26.5
MAP-WP-050-150	Aluminium Wall panel With Plywood	500 x 1500	23.5
MAP-WP-045-150	Aluminium Wall panel With Plywood	450 x 1500	22.2
MAP-WP-030-150	Aluminium Wall panel With Plywood	300 x 1500	17.4
MAP-WP-015-150	Aluminium Wall panel With Plywood	150 x 1500	13.7



MÄCH AluPly

WALL PANELS



Product Code	Description	Width X Height	Weight
		MM	Kg
MAP-WP-100-100	Aluminium Wall panel With Plywood	1000 X 1000	30.6
MAP-WP-075-100	Aluminium Wall panel With Plywood	750 X 1000	22.9
MAP-WP-060-100	Aluminium Wall panel With Plywood	600 X 1000	19.3
MAP-WP-050-100	Aluminium Wall panel With Plywood	500 X 1000	17.3
MAP-WP-045-100	Aluminium Wall panel With Plywood	450 X 1000	16.4
MAP-WP-030-100	Aluminium Wall panel With Plywood	300 X 1000	12.7
MAP-WP-015-100	Aluminium Wall panel With Plywood	150 X 1000	10.0

Product Code	Description	Width X Height	Weight
		MM	Kg
MAP-WP-100-075	Aluminium Wall panel With Plywood	1000 X 750	25.4
MAP-WP-075-075	Aluminium Wall panel With Plywood	750 X 750	19.1
MAP-WP-060-075	Aluminium Wall panel With Plywood	600 X 750	16.1
MAP-WP-050-075	Aluminium Wall panel With Plywood	500 X 750	14.5
MAP-WP-045-075	Aluminium Wall panel With Plywood	450 X 750	13.8
MAP-WP-030-075	Aluminium Wall panel With Plywood	300 X 750	10.7
MAP-WP-015-075	Aluminium Wall panel With Plywood	150 X 750	8.0

Product Code	Description	Width X Height	Weight
		MM	Kg
MAP-WP-100-050	Aluminium Wall Panel With Plywood	1000 x 500	18.5
MAP-WP-075-050	Aluminium Wall Panel With Plywood	750 x 500	13.7
MAP-WP-060-050	Aluminium Wall Panel With Plywood	600 x 500	11.4
MAP-WP-050-050	Aluminium Wall Panel With Plywood	500 x 500	10.2
MAP-WP-045-050	Aluminium Wall Panel With Plywood	450 x 500	9.6
MAP-WP-030-050	Aluminium Wall Panel With Plywood	300 x 500	7.2
MAP-WP-015-050	Aluminium Wall Panel With Plywood	150 x 500	5.7

MÄCH AluPly

MULTI PANELS

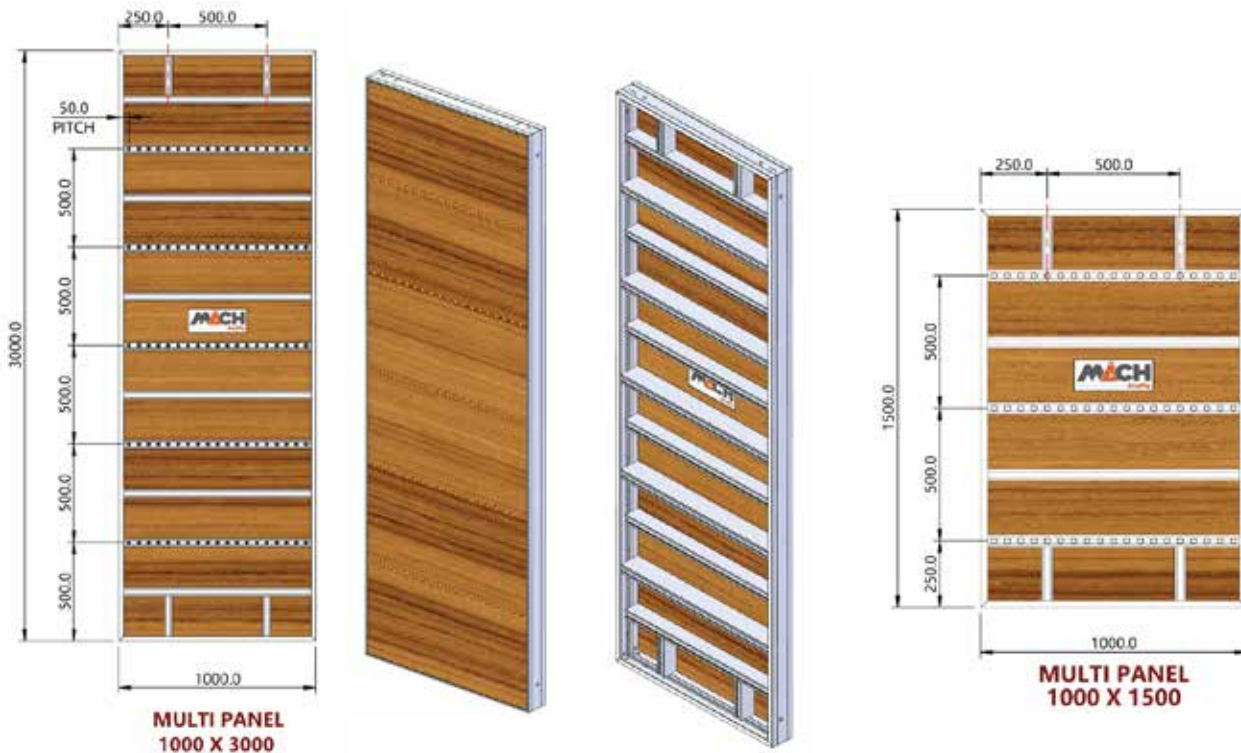
Multi panels are also known as Column panel, it can be used for walls & column.

MATERIAL

Aluminium Alloy 6061-T6 / Equivalent

FINISH

Mill Finish



Product Code	Description	Width X Height	Weight
		MM	Kg
MAP-MP-100-300	Aluminium Multi Panel With Plywood	1000 x 3000	83.4
MAP-MP-100-150	Aluminium Multi Panel With Plywood	1000 x 1500	46.7
MAP-MP-100-100	Aluminium Multi Panel With Plywood	1000 x 1000	31.9
MAP-MP-100-075	Aluminium Multi Panel With Plywood	1000 x 750	27.2
MAP-MP-100-050	Aluminium Multi Panel With Plywood	1000 x 500	19.8
MAP-MP-075-300	Aluminium Multi Panel With Plywood	750 x 3000	62.1
MAP-MP-075-150	Aluminium Multi Panel With Plywood	750 x 1500	34.5
MAP-MP-075-100	Aluminium Multi Panel With Plywood	750 x 1000	23.4
MAP-MP-075-075	Aluminium Multi Panel With Plywood	750 x 750	20.6
MAP-MP-075-050	Aluminium Multi Panel With Plywood	750 x 500	14.6

MÄCH AluPly

INTERNAL CORNER PANELS

Internal corner panels used to make internal joints between two wall OR multi panels firmly with smooth continuous finish.

MATERIAL

Aluminium Alloy 6061-T6 / Equivalent

FINISH

Mill Finish



Product Code	Description	Width X Height	Weight
		MM	Kg
MAP-IC-025-300	Internal Corner Panel With Plywood	250 x 250 x 3000	43.1
MAP-IC-025-150	Internal Corner Panel With Plywood	250 x 250 x 1500	22.9
MAP-IC-025-100	Internal Corner Panel With Plywood	250 x 250 x 1000	17.0
MAP-IC-025-750	Internal Corner Panel With Plywood	250 x 250 x 750	12.9
MAP-IC-025-050	Internal Corner Panel With Plywood	250 x 250 x 500	9.7



MÄCH AluPly

OUTSIDE CORNER PANELS

Outside corner panels used to make outer joints between two wall OR multi panels firmly with smooth continuous finish.

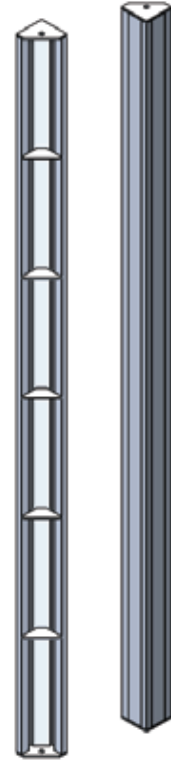
MATERIAL

Aluminium Alloy 6061-T6 / Equivalent

FINISH

Mill Finish

Product Code	Description	Width X Height	Weight
		MM	Kg
MAP-OC-012-300	Outside Corner Panel With Plywood	120 x 120 x 3000	19.1
MAP-OC-012-150	Outside Corner Panel With Plywood	120 x 120 x 1500	9.7
MAP-OC-012-100	Outside Corner Panel With Plywood	120 x 120 x 1000	6.8
MAP-OC-012-075	Outside Corner Panel With Plywood	120 x 120 x 750	5
MAP-OC-012-050	Outside Corner Panel With Plywood	120 x 120 x 500	3.4



SWING CORNER PANELS

Swing corner are is used when there is requirement of concrete wall casting other than 90° (Perpendicular).

MATERIAL

Aluminium Alloy 6061-T6 / Equivalent

FINISH

Mill Finish

Product Code	Description	Width X Height	Weight
		MM	Kg
MAP-SC-025-300	Swing Corner Panel With Plywood	250 x 250 x 3000	47
MAP-SC-025-150	Swing Corner Panel With Plywood	250 x 250 x 1500	25
MAP-SC-025-100	Swing Corner Panel With Plywood	250 x 250 x 1000	18.3

MÄCH AluPly

WALKWAY BRACKET

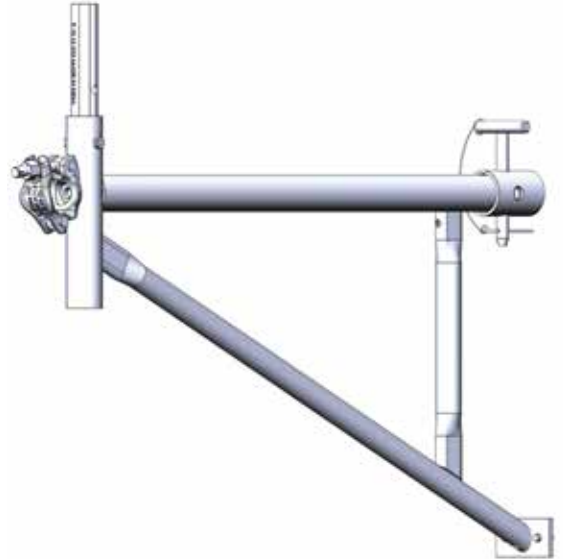
Board brackets are used to extend the work platform closer to the structure.

MATERIAL

Structural Steel

FINISH

HDG



Product Code	Description	Effective Length	Weight
		MM	Kg
MAP-WB	Walkway Bracket (225 X 3 Planks) with 1 Pin	800	8.4



HAND RAILING POST 1.0 M

Hand rails are used to provide safety measures to the workers working on platform. This handrails is attached to the brackets.

MATERIAL
Structural Steel

FINISH
HDG

Product Code	Description	Effective Length	Weight
		MM	Kg
MAP-HRP	Hand Railing Post 1.0	1000	5.7

MÄCH AluPly

BOTTOM BRACKET

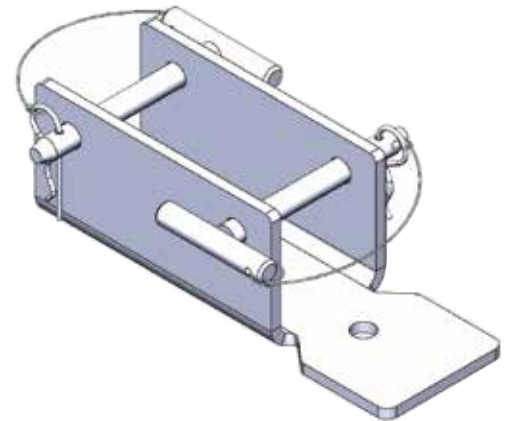
Bottom brackets are used to hold and provide angular movement to the Raker Props at the bottom of the surface or slab.

MATERIAL

Structural Steel

FINISH

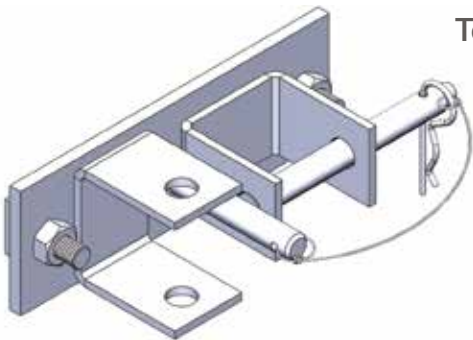
Electroplated



Product Code	Description	Weight
		Kg
MAP-2BB	Bottom Bracket with 2 Pins	4.8

TOP BRACKET

Top brackets are used to hold and provide angular movement to the Raker Props. And it is also used to hold walkways bracket using connecting pin. To be used for 450mm wide & above panels.



MATERIAL
Structural Steel

FINISH
Electroplated

Product Code	Description	Weight
		Kg
MAP-TB	Top Bracket With 1 Pin	2.6

TOP BRACKET WITH SINGLE U

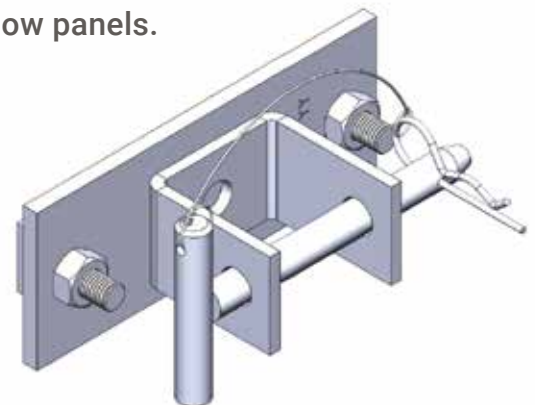
Top brackets are used to hold and provide angular movement to the Raker Props or Walkway bracket. To be used for 300mm wide & below panels.

MATERIAL

Structural Steel

FINISH

Electroplated



Product Code	Description	Weight
		Kg
MAP-TBS	Top Bracket With Single U (1 pin)	2

MÄCH AluPly

FOOTING BRACKET

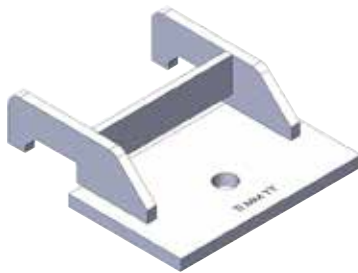
Footings brackets are crucial in the case of casting of the single side wall, it can be anchored to the base, keeping wall panels intact to the base/flooring.

MATERIAL

Structural Steel

FINISH

HDG



Product Code	Description	Weight
		Kg
MAP-FB	Footings Bracket	2

MULTI PANEL TIE CLAMP

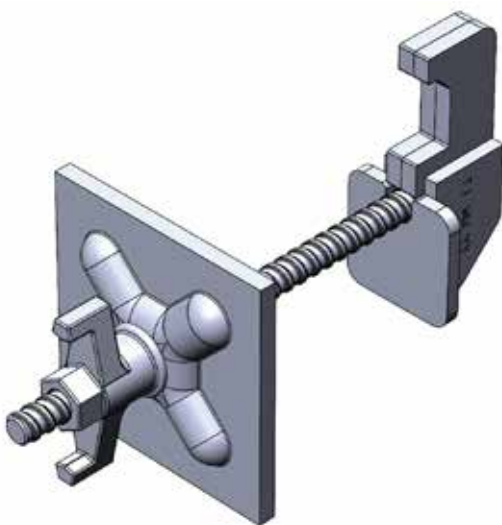
This clamp is specially designed to use for clamping of wall panel with multi panel generally at the end of the wall.

MATERIAL

Structural Steel

FINISH

Electroplated



Product Code	Description	Weight
		Kg
MAP-MPTC	Multi Panel Tie Clamp	3.6

MÄCH AluPly

CONNECTING PIN

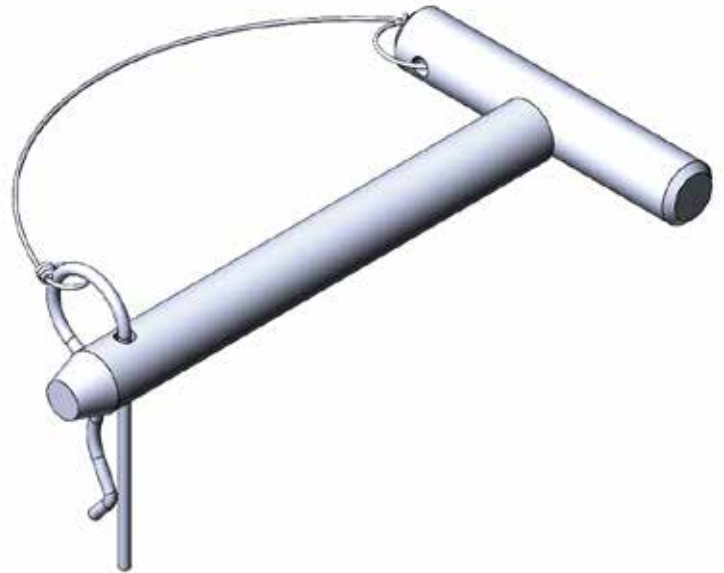
Connecting pins are used to connect props & brackets to the Wall panels.

MATERIAL

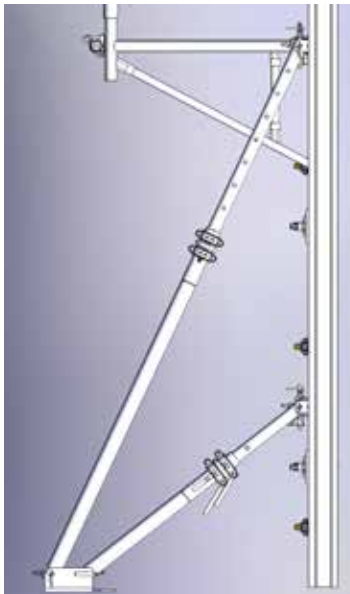
Structural Steel

FINISH

Electroplated



Product Code	Description	Weight
		Kg
MAP-CP16	Connecting Pin	0.4
MAP-CP20	Connecting Pin	0.5

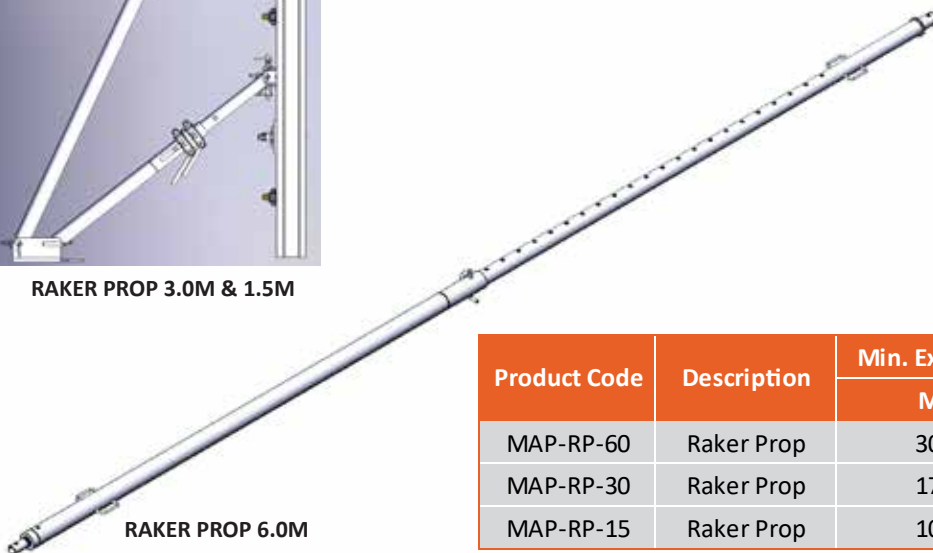


RAKER PROP 3.0M & 1.5M

RAKER PROP
 Prop is use to rigidity to the MÄCH AluPly SYSTEM it is easily attached to the wall panels using Top & Bottom Brackets.

MATERIAL
 Structural Steel

FINISH
 HDG



RAKER PROP 6.0M

Product Code	Description	Min. Extention	Max. Extention	Weight
		MM	MM	Kg
MAP-RP-60	Raker Prop	3000	6000	40
MAP-RP-30	Raker Prop	1750	3000	15
MAP-RP-15	Raker Prop	1000	1500	9.4



MÄCH AluPly

UNIVERSAL WALER

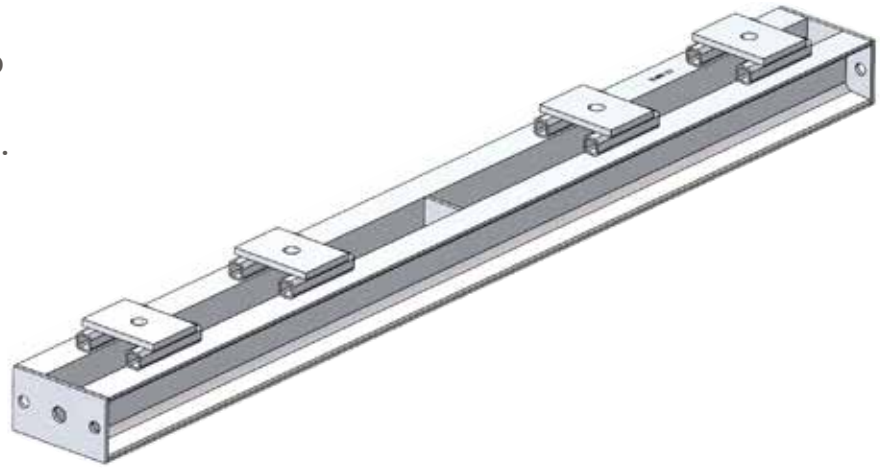
Universal waler is used to connect two panels firmly. This waler can be fixed horizontally or vertically using Tie Rod.

MATERIAL

Structural Steel

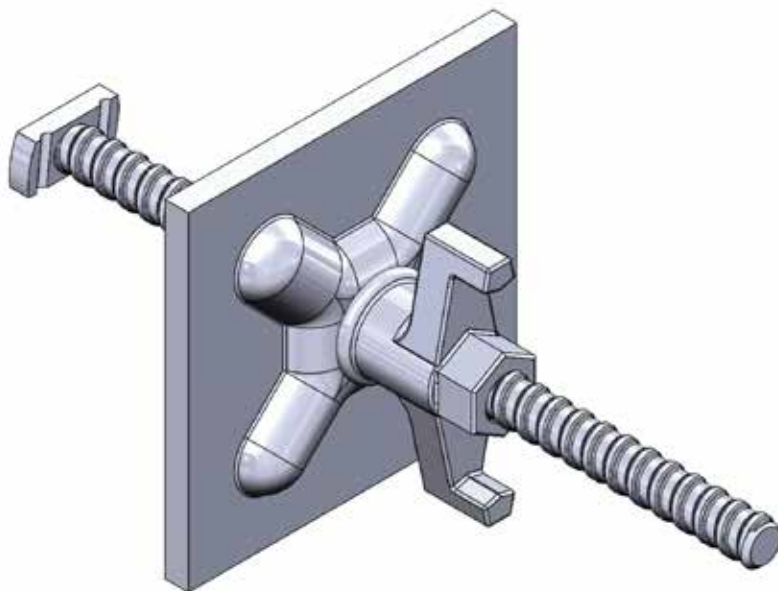
FINISH

HDG



Product Code	Description	Weight
		Kg
MAP-UW	Universal Waler	21.4

UNIVERSAL WALER TIE CLAMP
Universal waler Tie clamp is used to clamp Panel and universal waler.



MATERIAL
Structural Steel

FINISH
Electroplated

Product Code	Description	Weight
		Kg
MAP-UWTC	Universal Waler Tie Clamp	2.5



MÄCH AluPly

HINGE WALERS

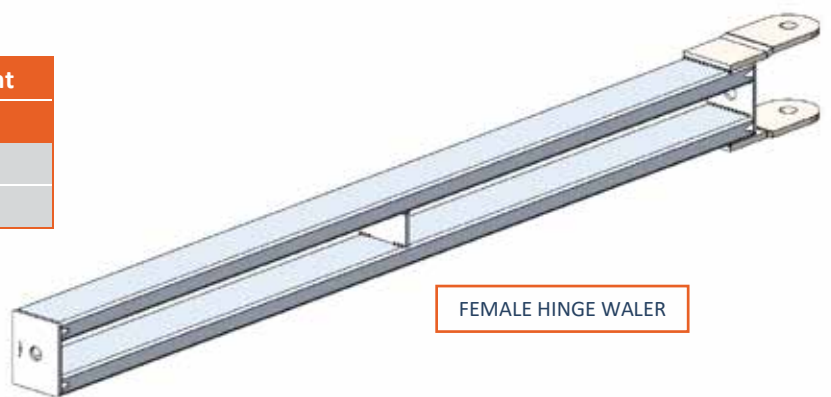
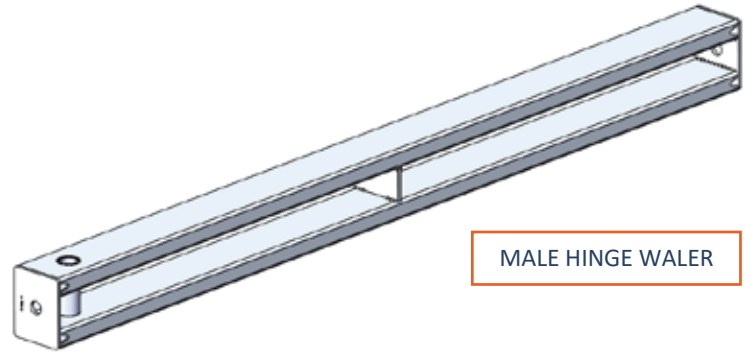
Hinge waler is special purpose waler used to align panels at angular wall (concrete) structure.

MATERIAL

Structural Steel

FINISH

HDG



Product Code	Description	Weight
		Kg
MAP-HW	Hinge Waler-Male	11.9
MAP-HWF	Hinge Waler-Female	13.3

350MM WIDE STEEL LADDER

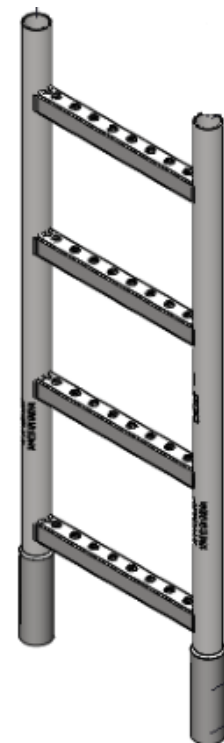
Steel scaffold ladders are used in conjunction with ladder brackets so that workers can access the elevated work platforms safely.

MATERIAL

Structural Steel

FINISH

HDG



Product Code	Description	Height	Weight
		MM	Kg
CSLW3AS	350mm Width Steel Ladder	1000	6.6
CSLWIOAS	350mm Width Steel Ladder	3000	18.4

MÄCH AluPly

LADDER CONNECTOR

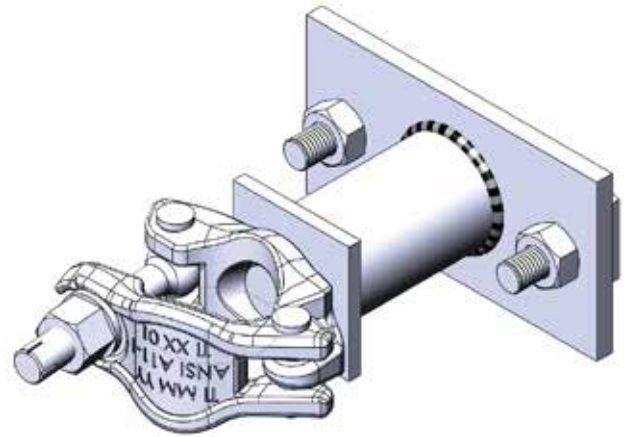
Ladder connector is used to connect ladder to the wall panels firmly.

MATERIAL

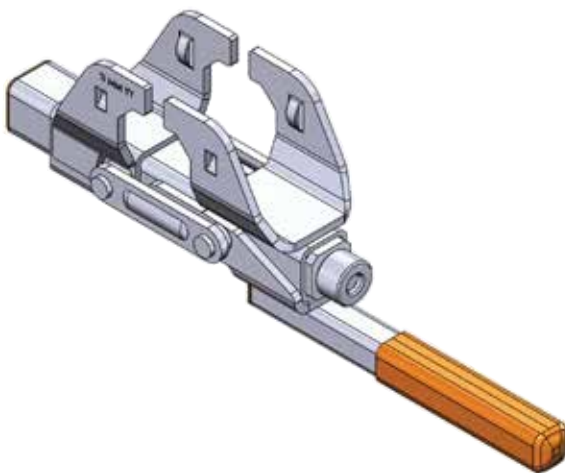
Structural Steel

FINISH

Electroplated



Product Code	Description	Weight
		Kg
MAP-LC	LADDER CONNECTOR	2.1



PANEL TO PANEL CLAMP

Panel to panel clamp is used to clamp two wall panels firmly.

MATERIAL

Structural Steel

FINISH

Electroplated

Product Code	Description	Weight
		Kg
MAP-WPC	Panel To Panel Clamp	2.3

ADJUSTABLE PANEL CLAMP

Adjustable panel clamp is used to clamp wall panels when there is gap between the two panels which is filled (Adjusted) by timber.

MATERIAL

Structural Steel

FINISH

Electroplated



Product Code	Description	Max Opening Size	Weight
		MM	Kg
MAP-APC-30	Adjustable Panel Clamp	300.0	4.5
MAP-APC-15	Adjustable Panel Clamp	150.0	4.0

MÄCH AluPly

BULK HEAD TIE CLAMP

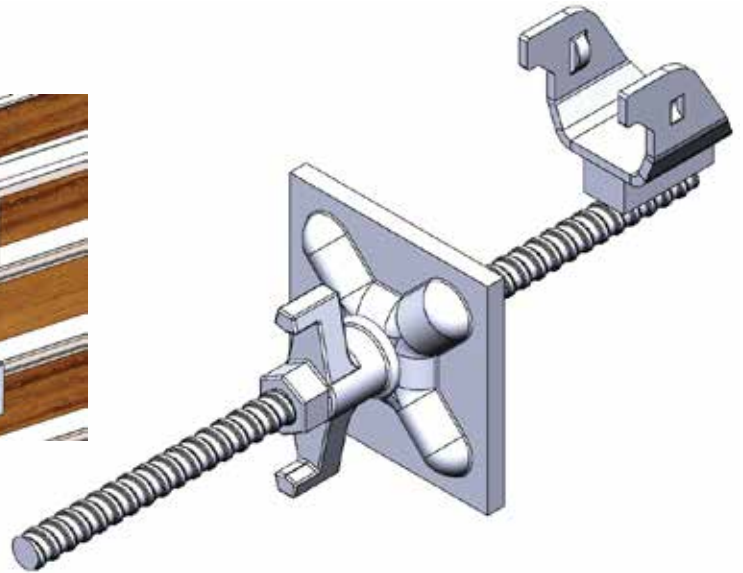
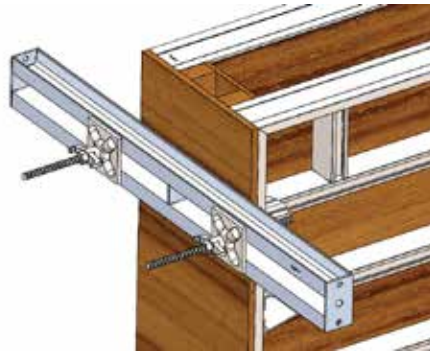
Bulk head tie clamp is used to clamp plywood at the end of the wall panels sides by keeping waler between plywood and base plate of the tie clamp.

MATERIAL

Structural Steel

FINISH

Electroplated



Product Code	Description	Weight
		Kg
MAP-BHTC	Bulk Head Tie Clamp	3.1



LIFTING BRACKET

Lifting Bracket is used to lift the pre-assembled Wall panels with accessories firmly.

MATERIAL

Structural Steel

FINISH

Electroplated

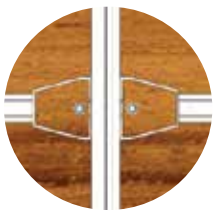
Product Code	Description	Weight
		Kg
MAP-LB	Lifting Bracket	8.3

LIFTING CAPACITY = 15KN

MÄCH AluPly

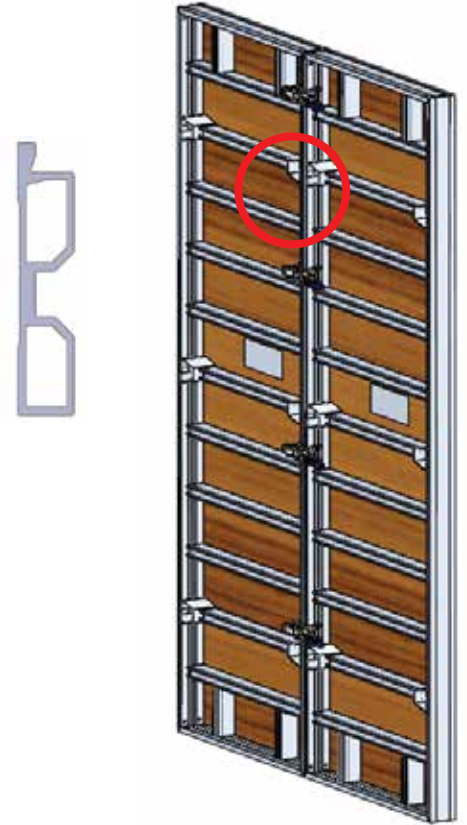
SYSTEM CHARACTERISTICS

External side of wall panels are welded with End Rail Profile, ribs are welded at every 25cm. The plywood is screwed to the wall panels.



END OR SIDE RAIL PANEL PROFILE

Two holes are allow Tie clamps to clamp panels with each other.



SYSTEM CHARACTERISTICS	
Material	Aluminium Alloy 6061-T6
Sizes Range	Width - 300 to 1000 Height - 3000
	Width - 300 to 1000 Height - 1500
Finish	Mill
Permissible Allowable Fresh Concrete Pressure	60 kN/msq.

PLYWOOD CHARACTERISTICS

12 mm Birch Plywood is lightweight, sturdy and economical to use in MÄCH AluPly SYSTEM. It provides smooth surface finish to the concrete after casting.

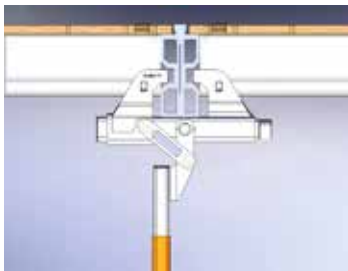
12 mm Birch Plywood	
Thickness	12.0 mm
Coating- Filmfaced	220 GSM
Weight	8.2 kg/mq
Thermal Conductivity	0.175 W/m ² K
Internal Composition	9 Layers (Birch)
External Protection	Phenolic Resin
Number of Re-uses	Min 50-60
Sides	Painted
Absorption of Humidity- Protected panel	Null
Absorption of Humidity- Cut panel	Elevated
Releases	Required
Repairs	With feelers

MÄCH AluPly

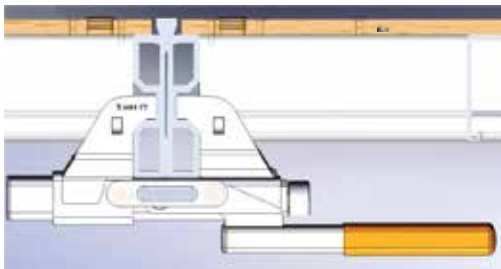
ASSEMBLY OF AluPly WALLS

PRE ASSEMBLY:

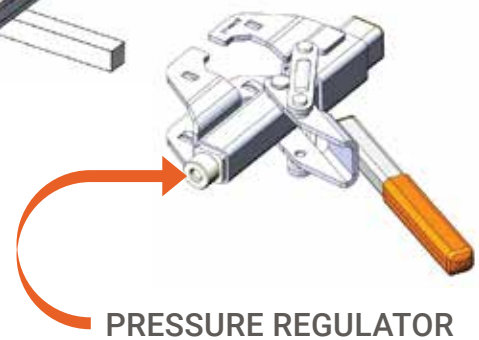
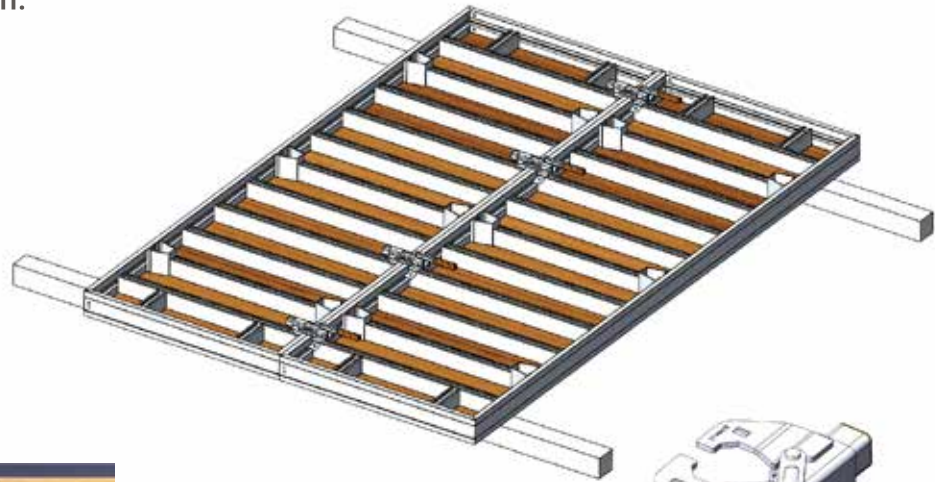
Keep Wall panels on Wooden support block align them & clamp using Panel To Panel clamp as shown.



UNLOCK POSITION

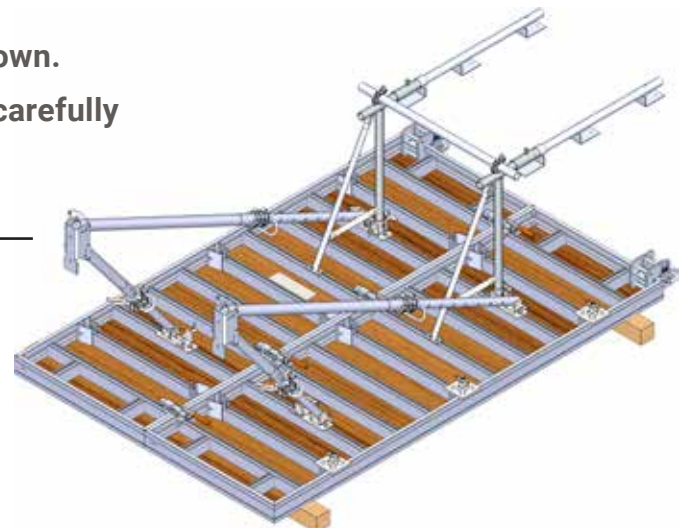
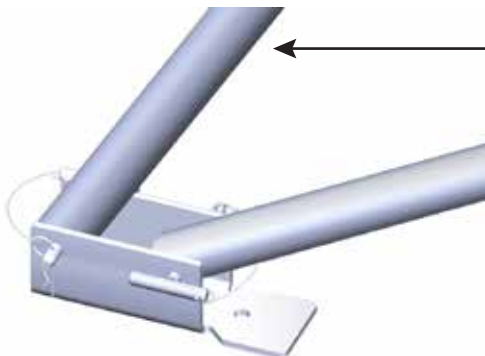


LOCK POSITION



PRESSURE REGULATOR

- After clamping of panels with each other, assemble top bracket to the wall panels & attach walkway brackets using connecting pin.
- Props can be assemble to the top brackets as shown.
- After assembly of accessories to the wall panel, carefully mount lifting clamp.



THE BOTTOM BRACKET IS ATTACHED TO THE PROPS USING CONNECTING PIN.

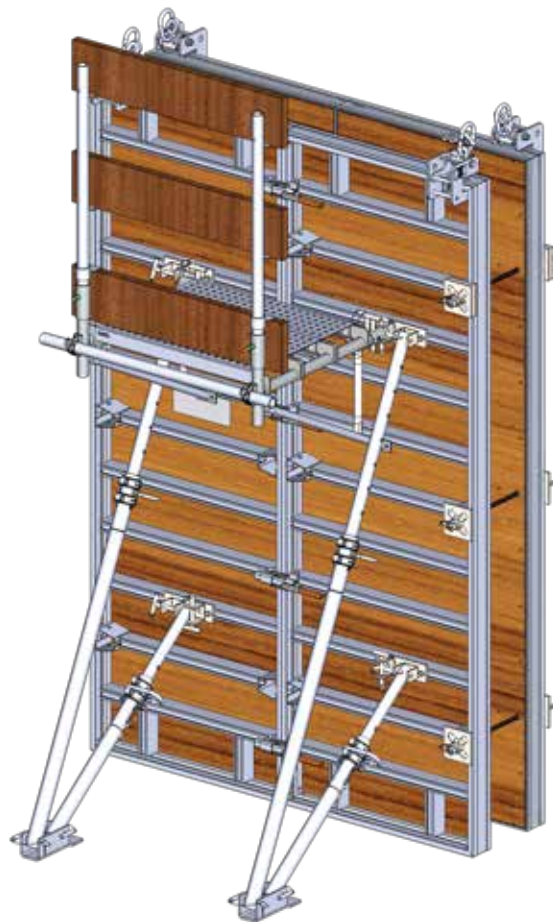
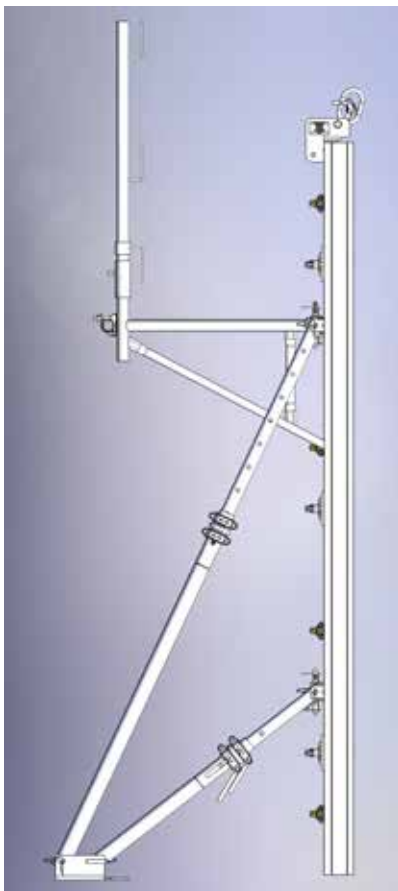


R Pin must be inserted in the connecting pin after connection with accessories.

■ ■ MÄCH AluPly

After Checking of lifting clamp is safe to handle carefully lift the wall panel system and position it vertically as shown.

- 1) Lift the system.
- 2) Spray the release liquid.
- 3) Position the assemble wall panel system where it is going to get fixed.
- 4) Fix the props to the floor.
- 5) Insert the tie rod with plate & wing nut.
- 6) Keep the PVC spacer between the two wall panels, it ensures the distance & parallelism between them.
- 7) Add planks between the walkway brackets. Use wooden decks in guardrails.
- 8) Unhook the lifting clamp.

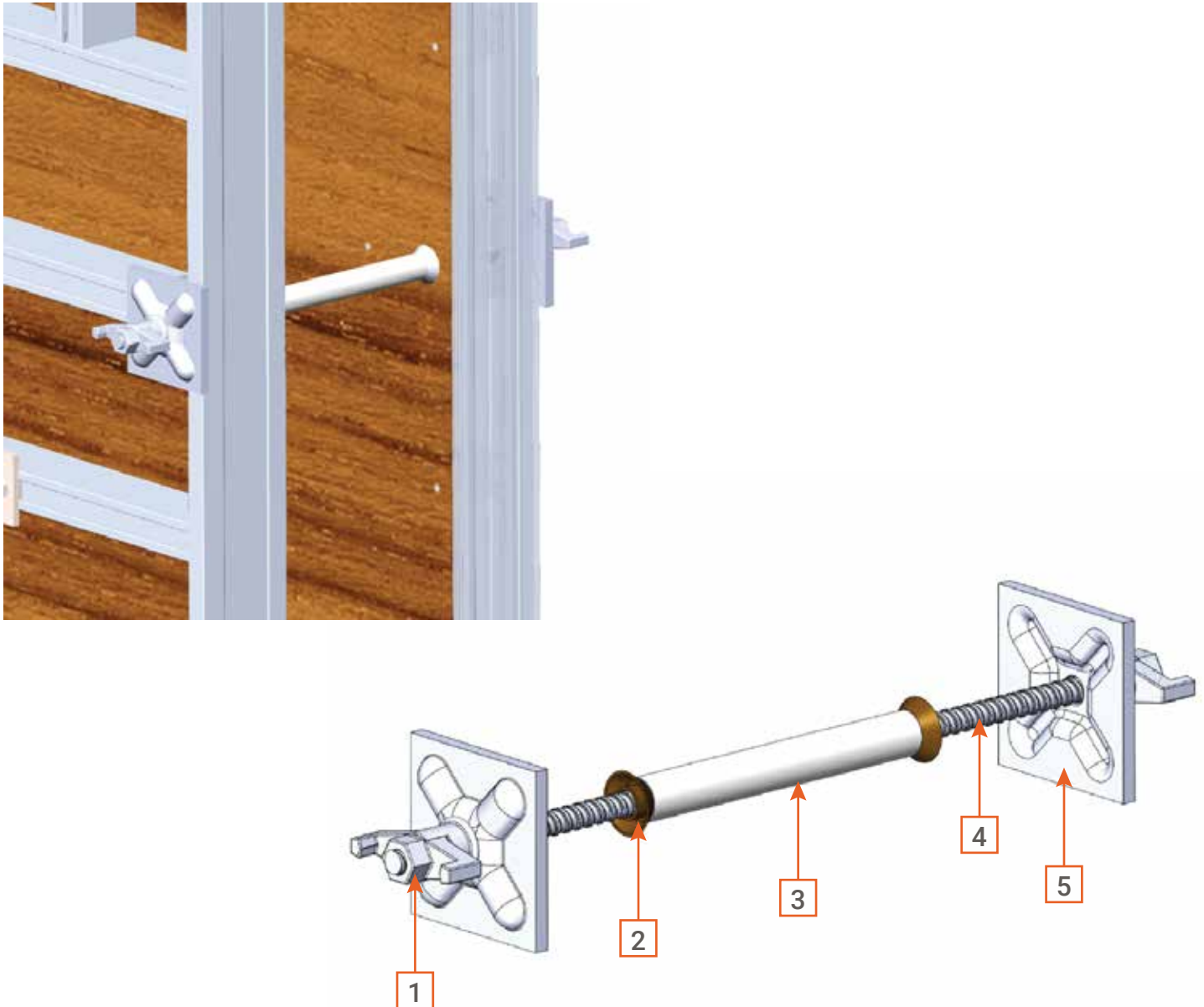


Repeat Same Procedure to assemble corresponding wall panels.

After assembly from both sides, pour concrete – Permissible pressure of fresh concrete 60 kN/m².

■ ■
MÄCH AluPly

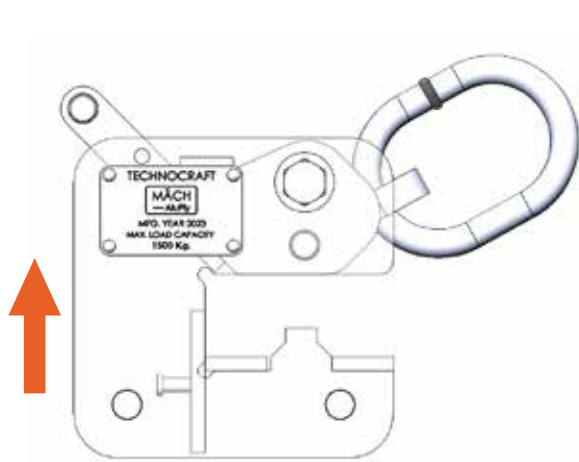
DETAILING OF TIE ROD WITH PLATE



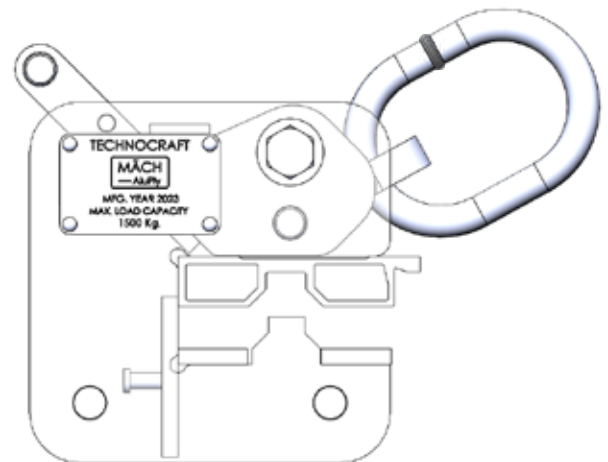
- 1** WING NUT
- 2** PLASTIC PLUGGING CAP
- 3** PLASTIC TUBE
- 4** Ø16.0mm TIE ROD
- 5** SUPPORT PLATE

■ ■
MÄCH AluPly

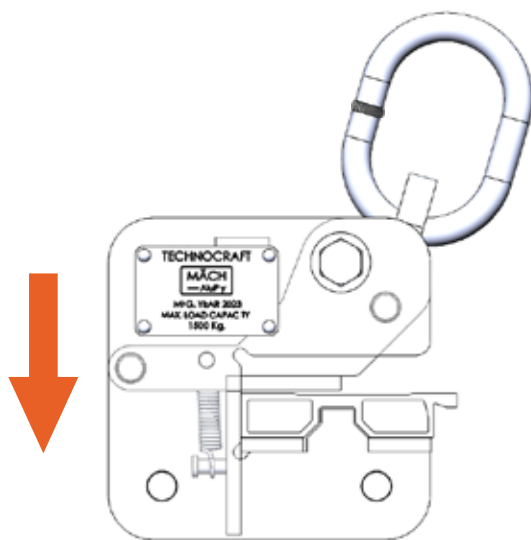
OPERATING INSTRUCTIONS FOR LIFTING BRACKET



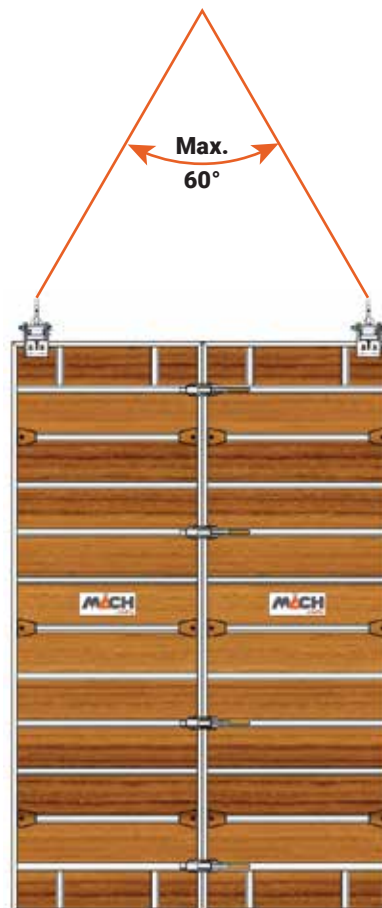
LIFT THE HANDLE UNTIL IT COMES TO A STOP.



INSERT LIFTING BRACKET ON SECTION OF THE PANEL.



CLOSE THE HANDLE UNTIL IT COMES TO A STOP.



The spreading angle between the ropes of the lifting bracket should not exceed more than 60° as shown.

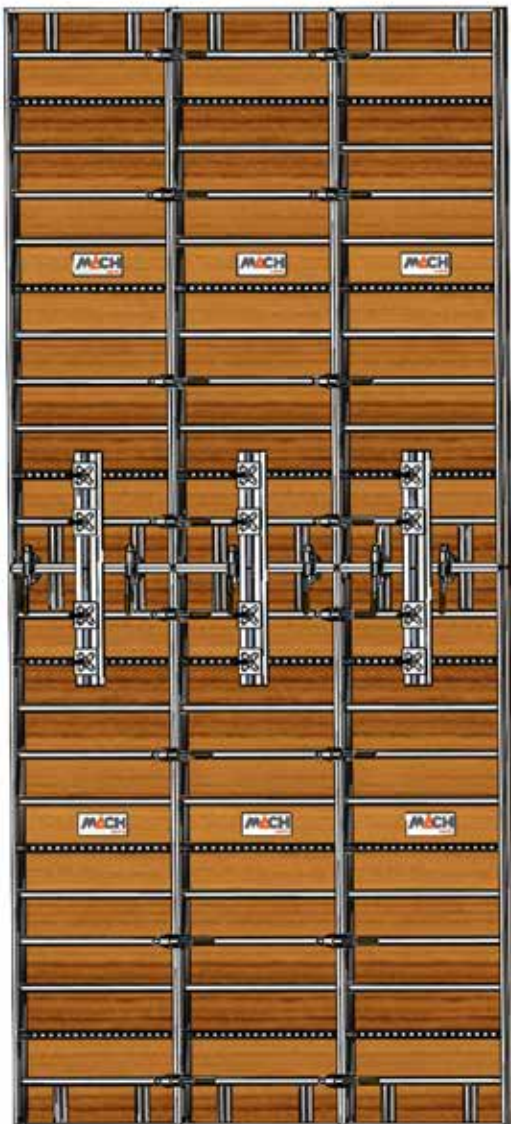


Maximum load on lifting bracket should not exceed more than 1500 kg (15kN).

■ ■
MÄCH AluPly

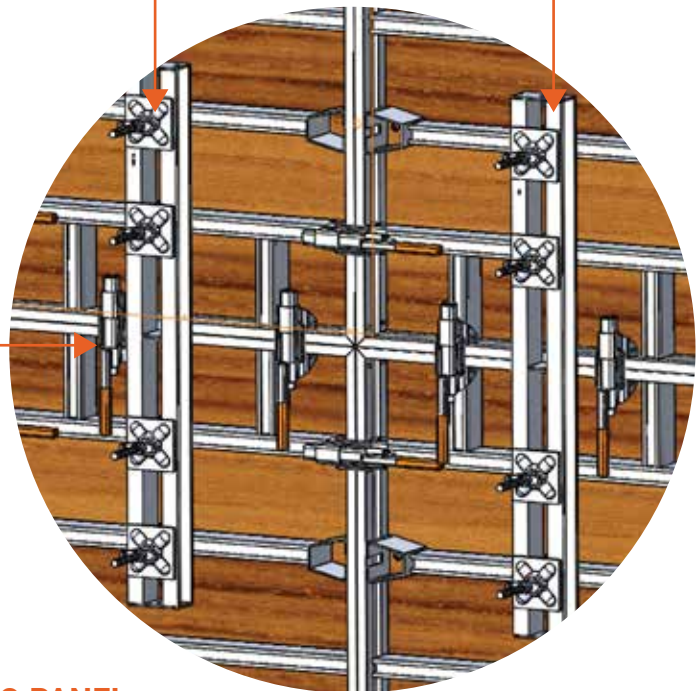
HIGH WALLS

When there is requirement of more than three meters walls, the waler & clamps are used to connect two panels vertically, this ensures alignment of panels and transmit the anchoring force the panels.



**UNIVERSAL WALER
TIE CLAMP**

UNIVERSAL WALER

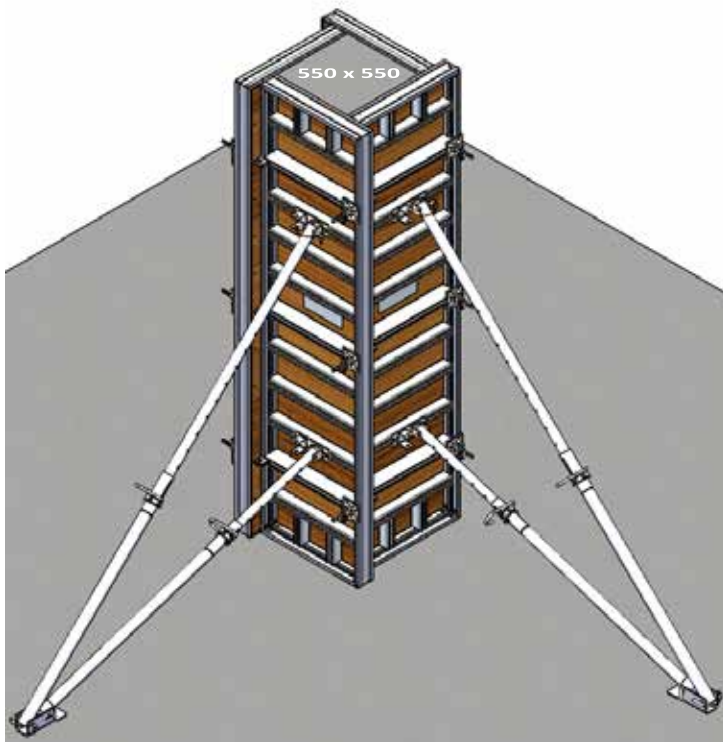


**PANEL TO PANEL
CLAMP**

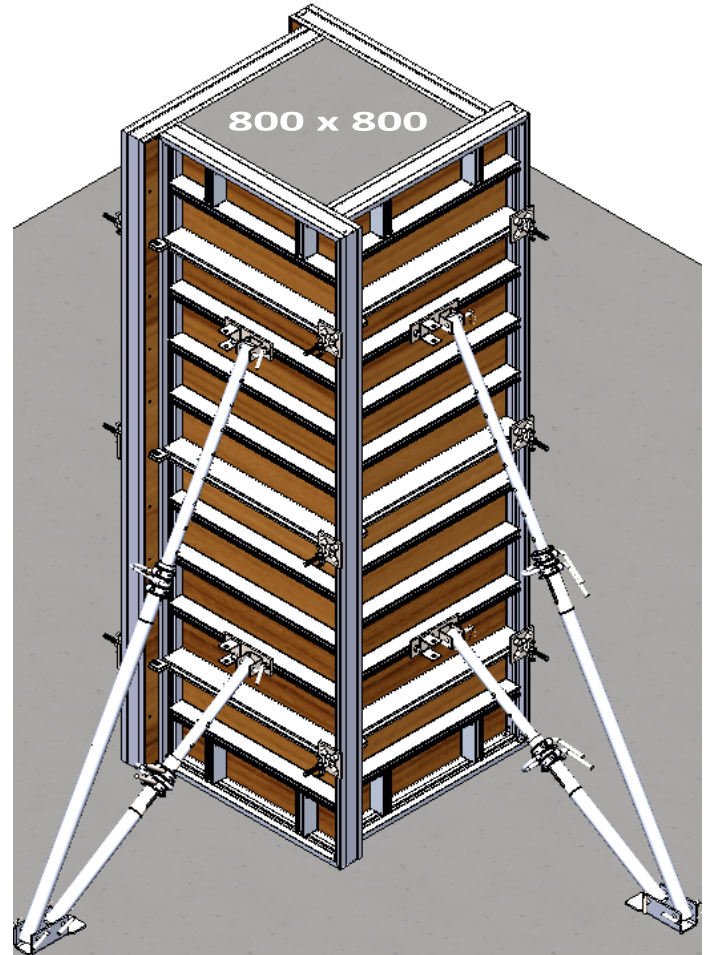
Use panel to panel clamp & universal waler for more than three meter high walls.

■ ■
MÄCH AluPly

ADJUSTABLE COLUMNS SYSTEM



750mm (2'6") WIDE MULTIPANEL



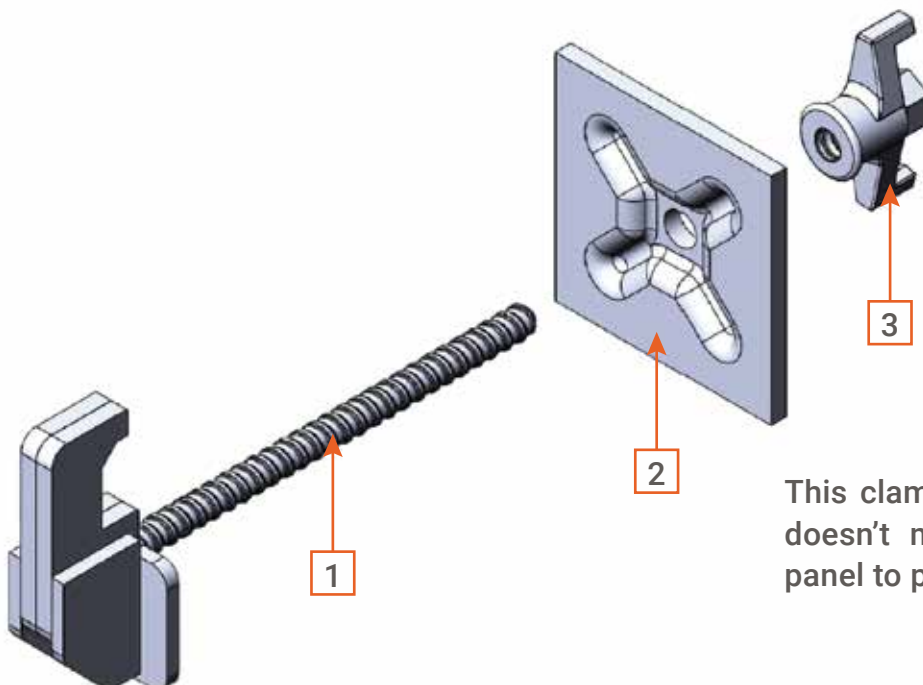
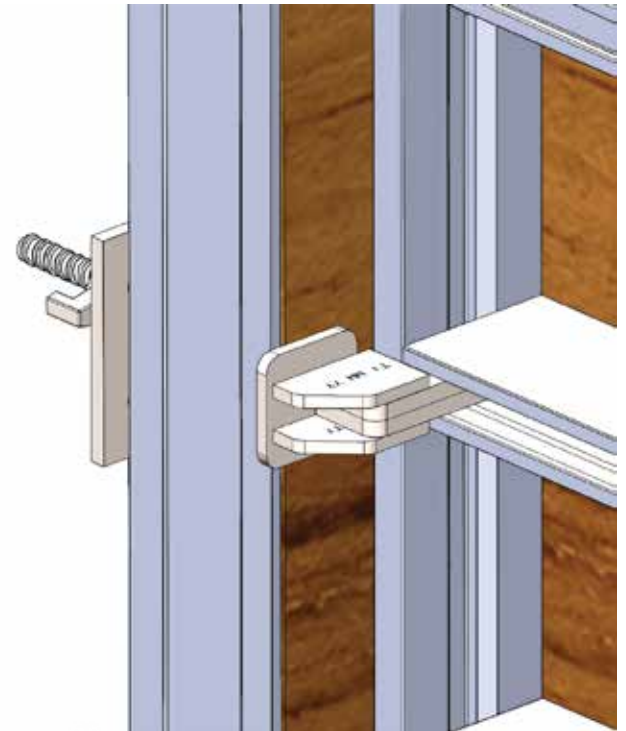
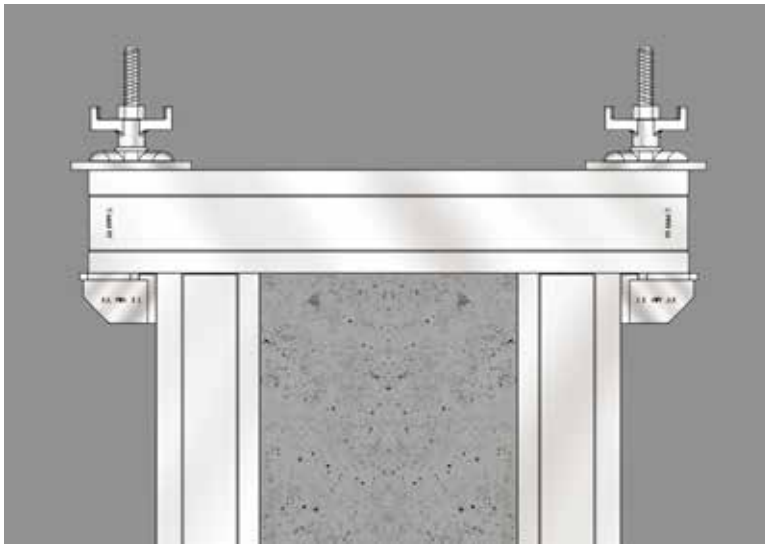
1000mm (3') WIDE MULTIPANEL

COLUMN SYSTEM CHARACTERISTICS

Material	Aluminium Alloy 6061-T6
Sizes Range For 750 Panel	200 x 200 To 550 x 550
Sizes Range For 1000 Panel	200 x 200 To 800 x 800
Finish	Mill
Permissible Fresh Concrete	60kN/msq.



■ ■
MÄCH AluPly

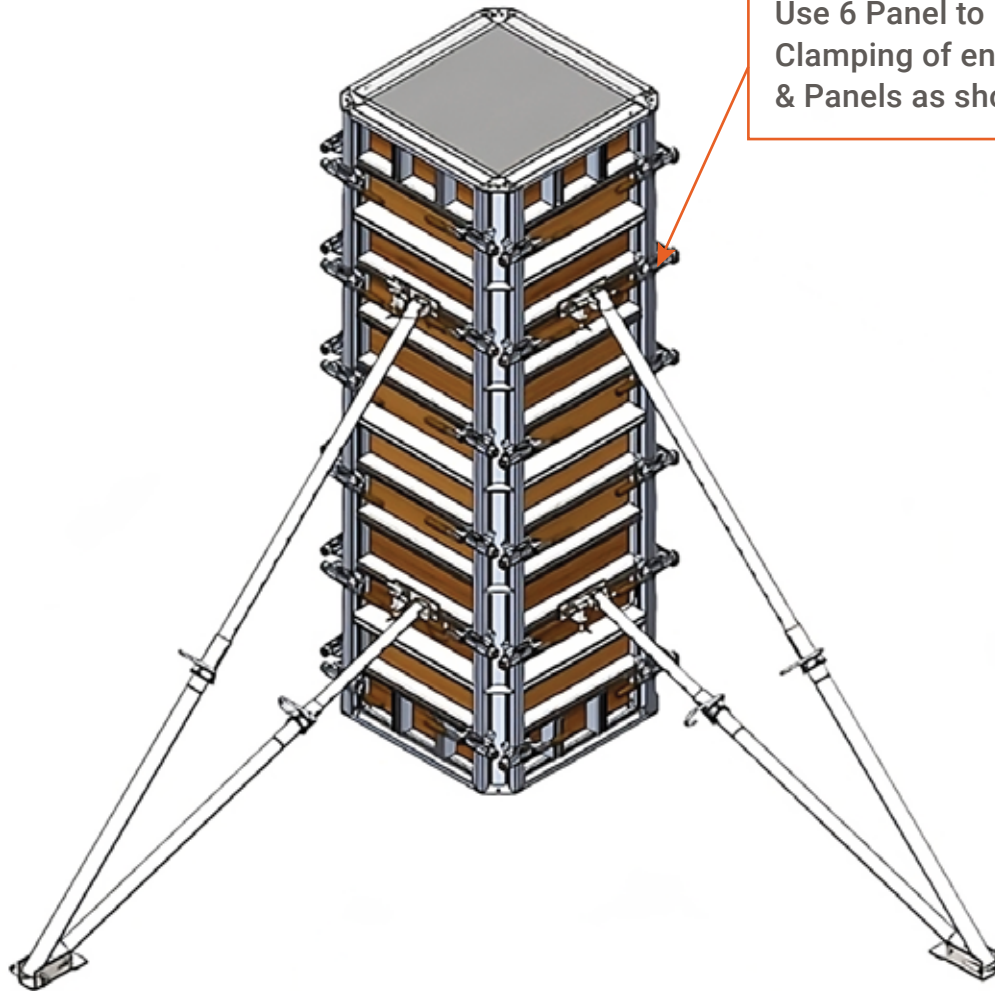


This clamp is used when connections hole doesn't match with each other or where panel to panel clamps cannot be used.

- 1** MULTI PANEL TIE ROD
- 2** SUPPORT PLATE
- 3** WING NUT

■ ■
MÄCH AluPly

COLUMN WITH OUTER CORNER



Use 6 Panel to Panel clamps for Clamping of end of Outer corner & Panels as shown.

COLUMN WITH OUTER CORNER CHARACTERISTICS

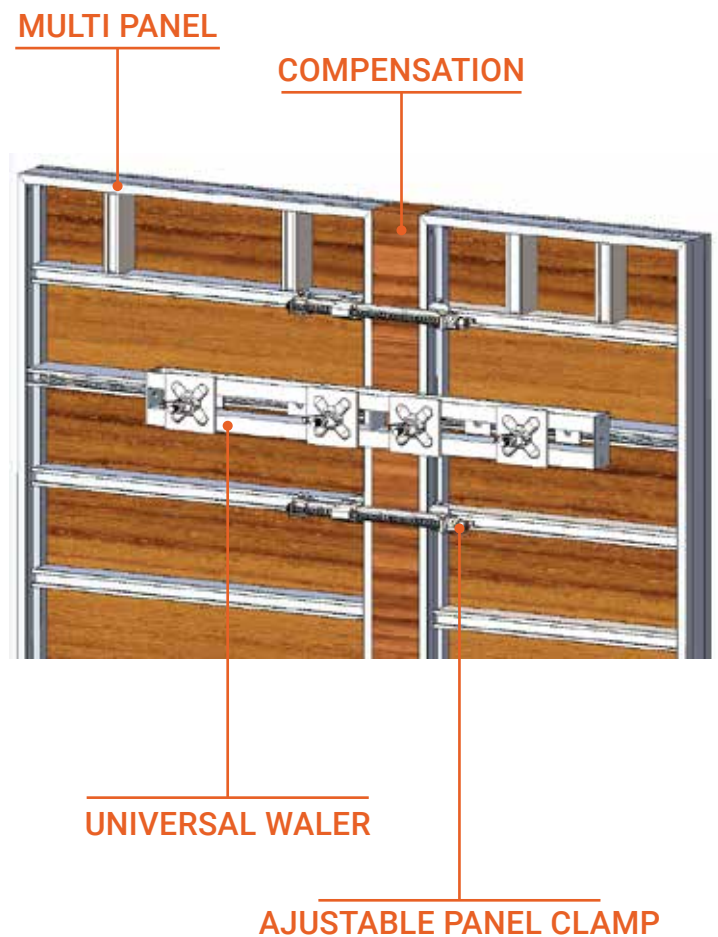
Material	Aluminium Alloy 6061-T6	
Sizes for 1.5M Height	750 x 750	1000 x 1000
Sizes for 3.0M Height	750 x 750	1000 x 1000
Finish	Mill	
Permissible Fresh Concrete Pressure	60kN/msq.	



■ ■
MÄCH AluPly

COMPENSATION BETWEEN WALL PANELS

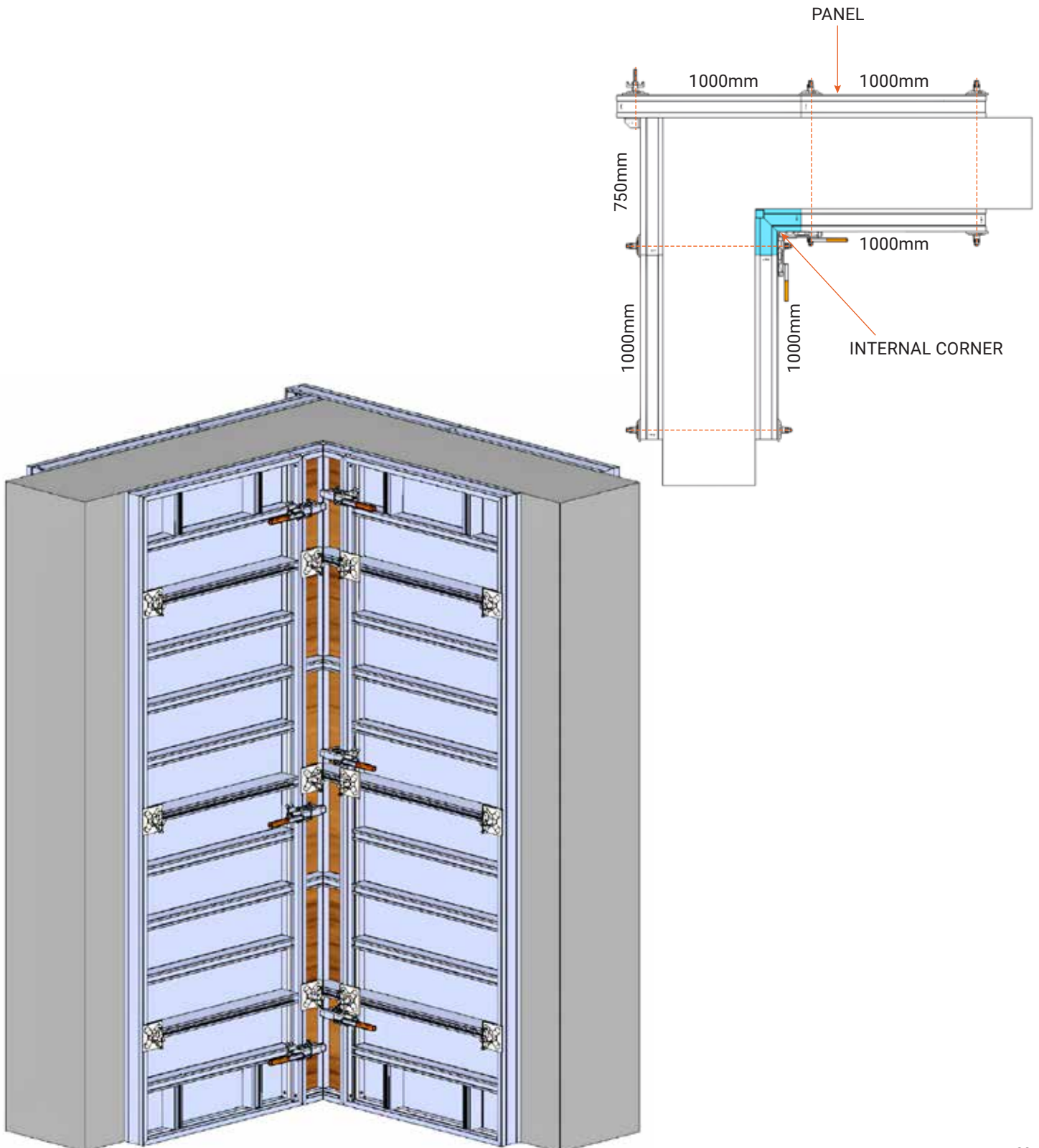
Compensation wood is kept between the two Multi panels to complete the formwork which is having small gaps. Two panels are then clamped between the compensation using adjustable panel clamp. Using Adjustable panel clamp sizes up to 300 mm of compensation timber can be used. Also use Universal Waler at tie rod hole position to avoid the panel deformation as shown in the below sketch.



■ ■
MÄCH AluPly

WALL PANELS AT CORNERS

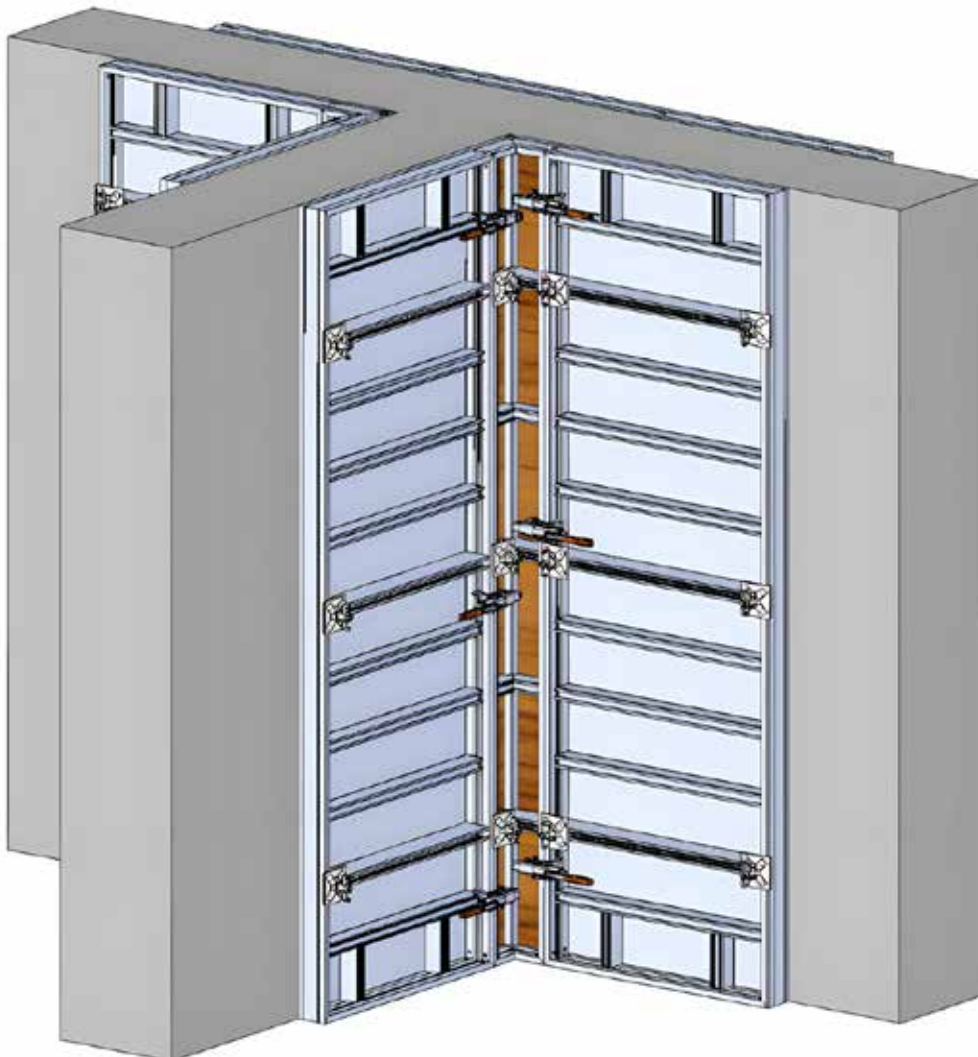
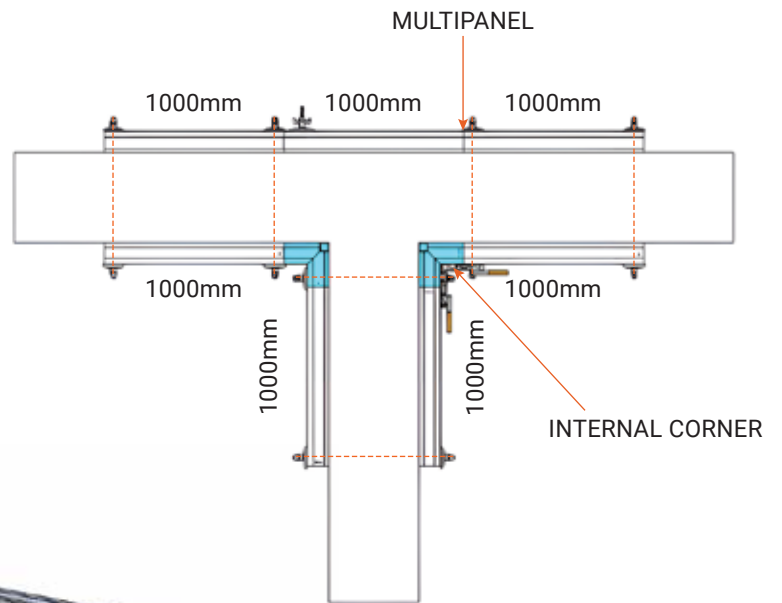
Using Multi-panels at the corners of the walls, there is no need of the compensation element (Timber) for wall width up to 500.0mm.



■ ■
MÄCH AluPly

WALL PANELS AT T-CLOSURES

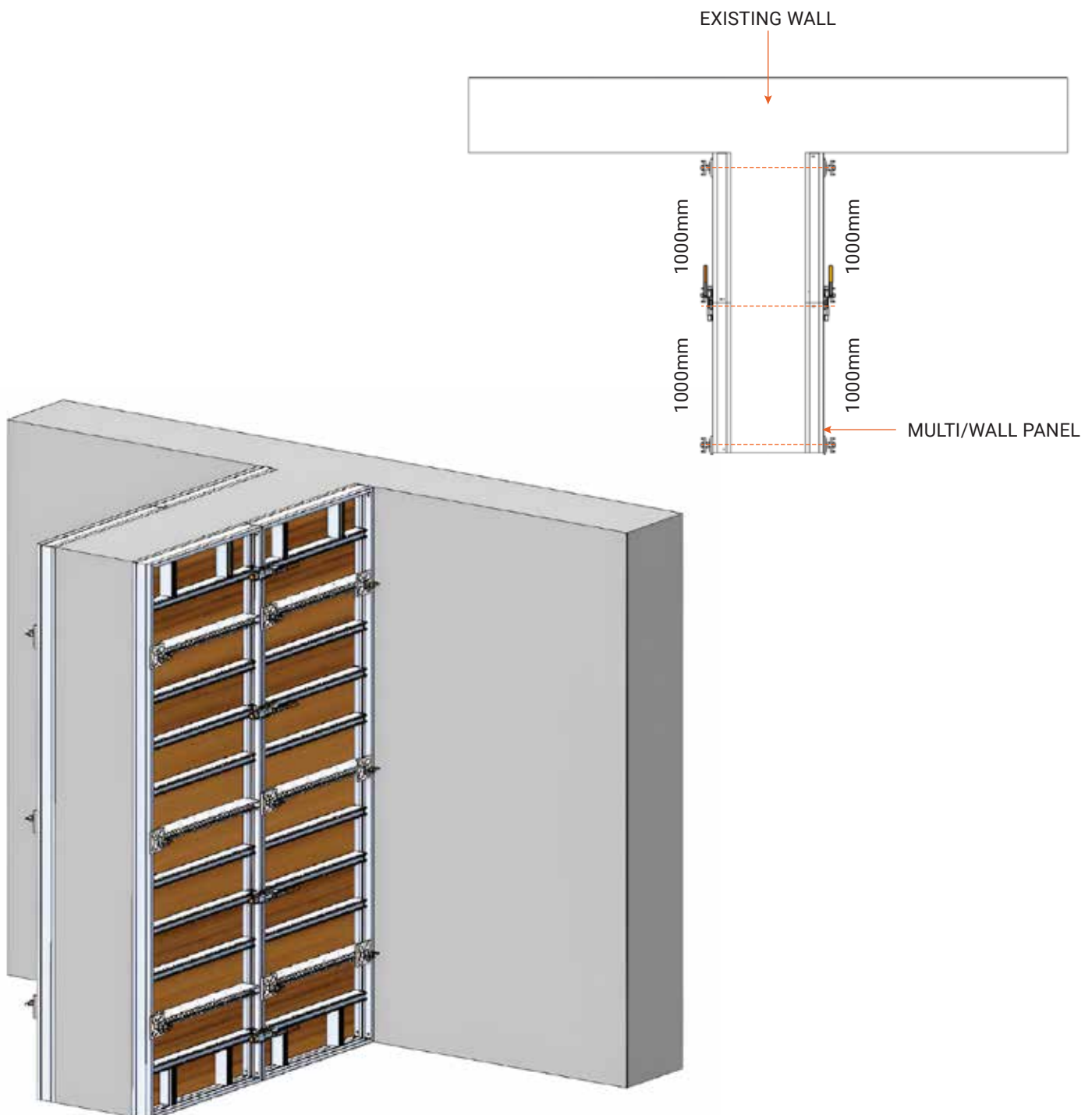
Wall panels at T-Closures can be easily assembled using multi-panels, this setup may or may not requires compensation element (Timber).



■ ■ MÄCH AluPly - SYSTEM GUIDE

WALL PANELS AT CONTINUING WALL

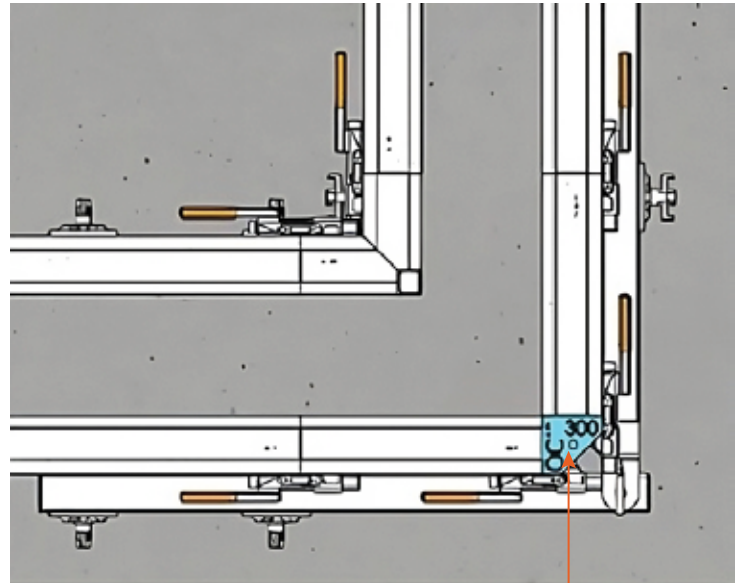
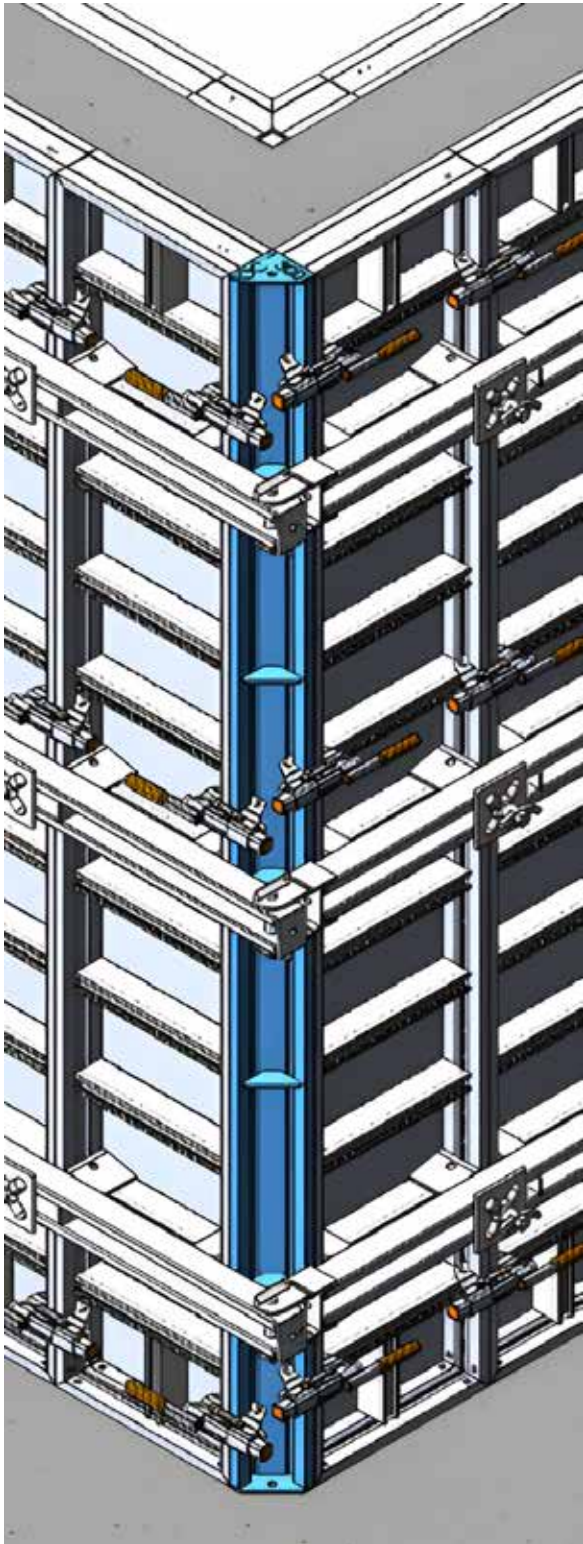
Existing walls can be continued using wall panels, the side off wall panels can directly touch to the face of the existing wall, as shown in image.



■ ■
MÄCH AluPly

OUTSIDE CORNER 90°

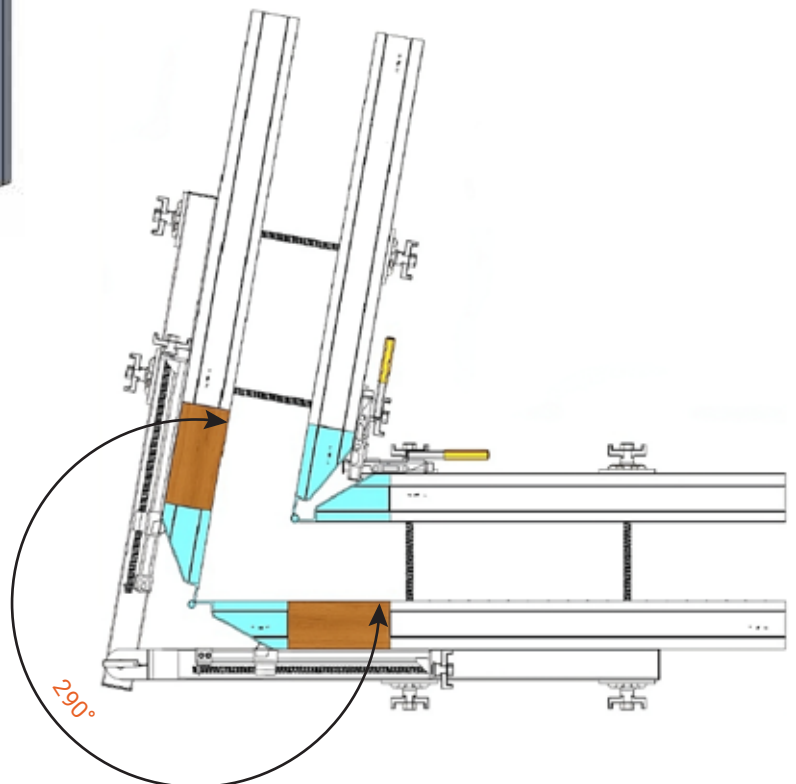
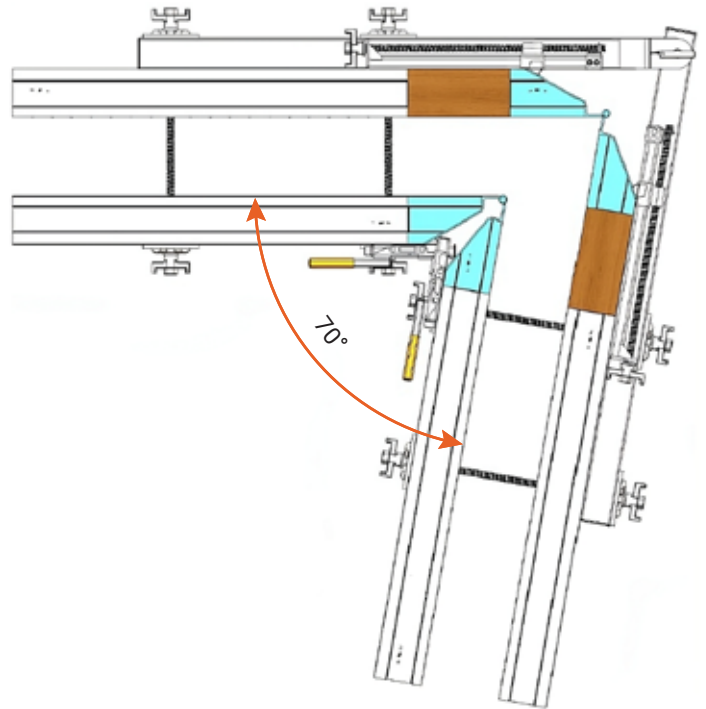
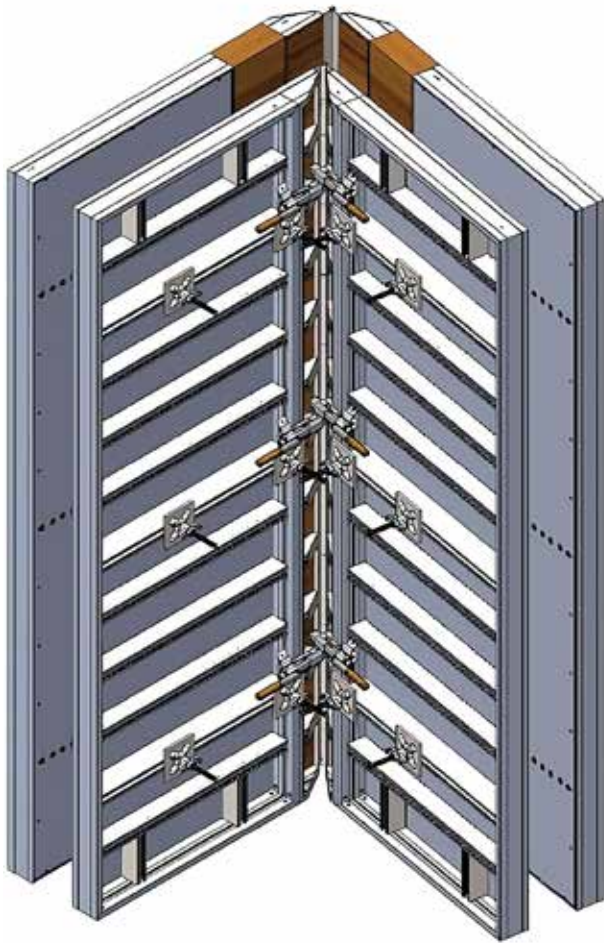
Outside corner is a solution for the walls with sharp 90° turn, it is clamp to the wall panels or multipanel as per requirement of the site.



OUTSIDE CORNER

■ ■
MÄCH AluPly

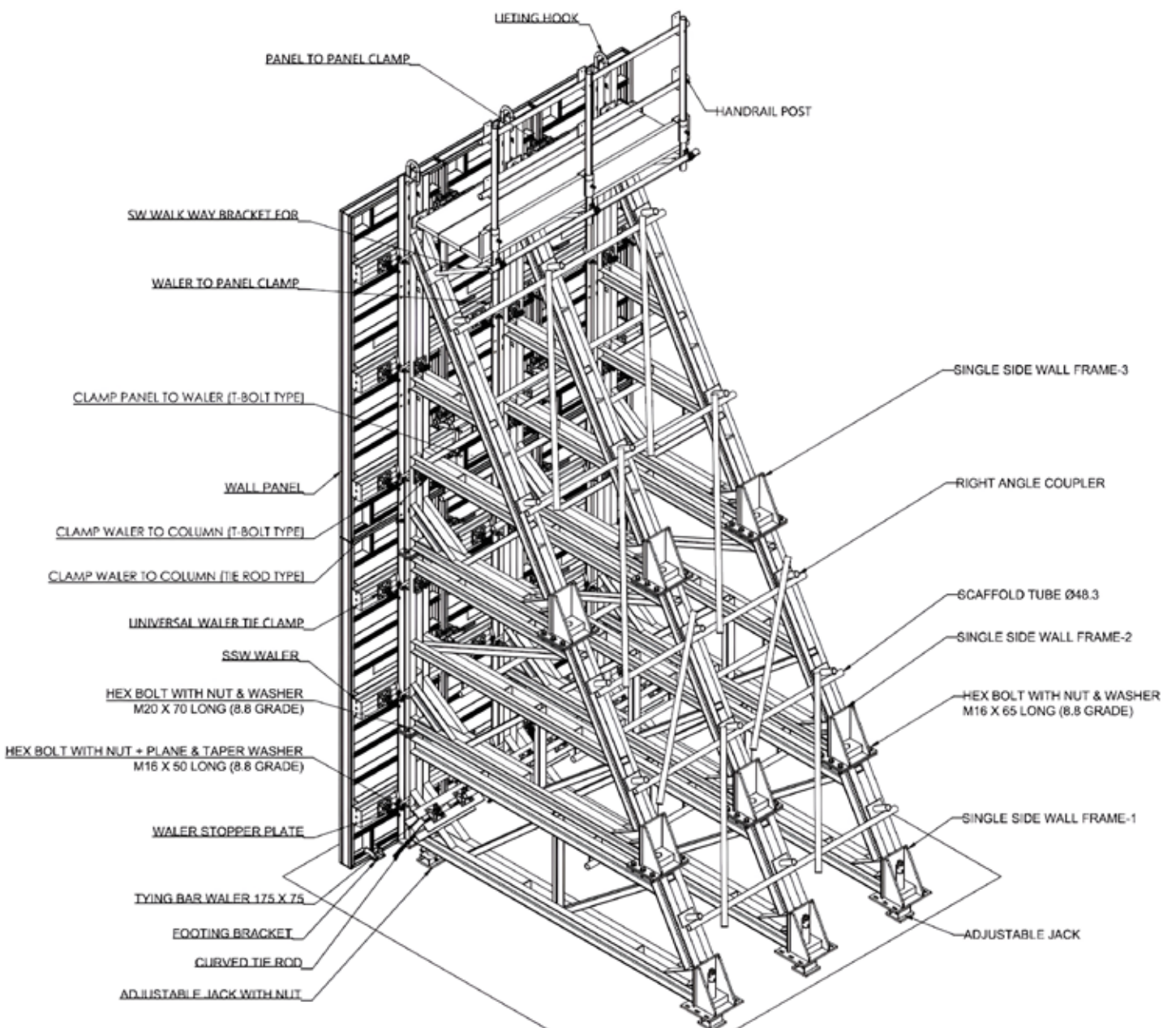
SWING CORNER WITH HINGE WALER



MÄCH AluPly

SINGLE SIDED WALL SOLUTIONS

Single sided wall solutions are meant to be provided where the wall panels from both sides are not possible, single sided wall solutions is used for retaining walls. Structural members are arranged and fixed to panels to withstand the permissible loads acting on the panels.



TYPICAL ARRANGEMENT OF SINGLE SIDED WALL



■ ■ MÄCH AluPly

SYSTEM MAINTAINANCE & CLEANING

- Panels and Accessories of the system must be cleaned & checked before each use.
- After casting of the concrete, the residue of concrete on Panels & Accessories to be cleaned using cleaning machine & scalper.
- Before next pouring of the fresh concrete, the surface of the plywood on panels should be enrich with release agent.
- The thorough repairing should perform in the case of any dent, deformation or broken weld points.
- All Lifting & Clamping accessories must be working smoothly. If not, it's should get repaired before getting used.



■ ■ DESIGN SUPPORT

Technocraft places a very high importance on delivering superior design support, and believes our design support differentiates us in the market. Our highly skilled battery of designers having knowledge of the latest design software and its filed applications provide customized design support in consultation to customer's technical team.

Our design team helps you to determine which product best suit your needs as per project's specific architecture and the site conditions and design a complete system which suits your project to the hilt.



■ ■ SITE SUPPORT

Technocraft is focused on providing our customers with all the support required to ensure a smooth usage of the Mäch One system ensuring maximum time saving with minimum deployment of manpower and equipment. Whether this includes construction management or on-field engineering, technical support during project execution or training of the workforce, our site support team is committed to ensure a safe and reliable implementation, streamlining the project execution and transition.

We understand that site support doesn't merely mean to guide the customer on your product's usability. The objective of our site support team is to increase the productivity and the structural quality from the first draft to the finalization of the building.



■ ■ AFTER SALES SUPPORT

Our customer's success is our success and undoubtedly, the customer's growth is our resultant growth. We further extend our philosophy- "Our customer's saving is our saving"

Our sales, Management and engineering teams have experience in a wide range of Projects and Industries. We understand the changing needs of our customers when they move from one project to another. We work in close partnership with our clients in their new projects in both the development and refinement of designs, formwork planning, reuses of the existing inventory.

■ ■
AMONG OUR CUSTOMERS



■ ■ MÄCH AluPly

With more than 4 decades of manufacturing and exporting competency, the Technocraft group extends its expertise in the scaffolding and formwork design and production for clients all over the world.

“Technocraft” was recognized as an export house by Government of India in 1979. Technocraft manufactures high precision & sophisticated Drum Closures Products and it successfully managed to capture the Middle East, USA & Europe export markets. Promptly the company established several foreign subsidiaries for stock mobilisation to their foreign customers.

From inception till 1994, Technocraft continued developing and increasing the production of Drum Closures until it became one of the largest and most recognized suppliers of Drum Closures in the world. The company subsequently in 1994 acquired “Maharashtra Steel Tubes Ltd” from Sicom, which manufactured Steel Pipes. Technocraft opened an office in United Kingdom (UK) to increase the European market and this was the turning point in its expansion program.

Technocraft as a group has been a predominant player in the precision engineering sector & it has done a forward integration of Tube Division by producing high precision scaffolding systems for building construction. Technocraft has been constantly upgrading its capacity & improving its standards to meet the ever increasing expectations of its customers. The strategy adopted by the company comprises of growth through constant innovation, enter new categories, and focus both on domestic as well as foreign markets.

Head Quartered in Mumbai, the company is listed on the Bombay Stock Exchange as well as the National Stock Exchange.





TECHNOCRAFT
INDUSTRIES INDIA LTD.

■ ■ MÄCH AluPly

OVERSEAS DISTRIBUTION CENTERS

USA

AAIT/Technocraft Scaffold Distribution LLC

HOUSTON

11515 Crosby Freeway, Houston, TX 77013, USA | Email: john.moran@technocraftgroup.com

MIAMI

8430 NW 93rd St, Medley, FL 33166, USA | Email: john.moran@technocraftgroup.com

AUSTRALIA

Synergy Access & Scaffolds

2 Church Road, Moorebank NSW -2170, Sydney, Australia

Email: meljarrar@synergy-is.com

UNITED KINGDOM

Technocraft International Ltd.

Unit 2, Hammond Court, Hammond Avenue, Whitehill Industrial Estate,

Stockport, Cheshire SK4 1PQ, United Kingdom | Email: leigh@technocraft.com | sales@technocraftgroup.com

POLAND

Technocraft Trading Sp z o.o., Lodz

Lodz-92-318, at 133 M Al, Pilsudskiego, Poland | Email: balraj@technocraft.pl |

NEW ZEALAND

Technocraft NZ Limited

59, Lady Ruby Drive, East Tamaki, Auckland, New Zealand | Email: jason.maheno@technocraftgroup.com

HEAD OFFICE

TECHNOCRAFT INDUSTRIES (INDIA) LTD.

Technocraft House, A-25, Road No. 3, M.I.D.C., Andheri (East), Mumbai – 400093, INDIA.

Tel. No.: (91) 22 4098 2222 / 4098 2202

Fax No.: (91) 22 2835 6559 / 2836 7037

Email: amit.musaddy@technocraftgroup.com

Email: mudit@technocraftgroup.com

Website: sf.technocraftgroup.com



TECHNOCRAFT
INDUSTRIES INDIA LTD.